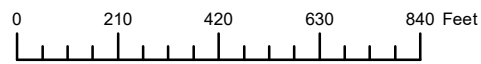


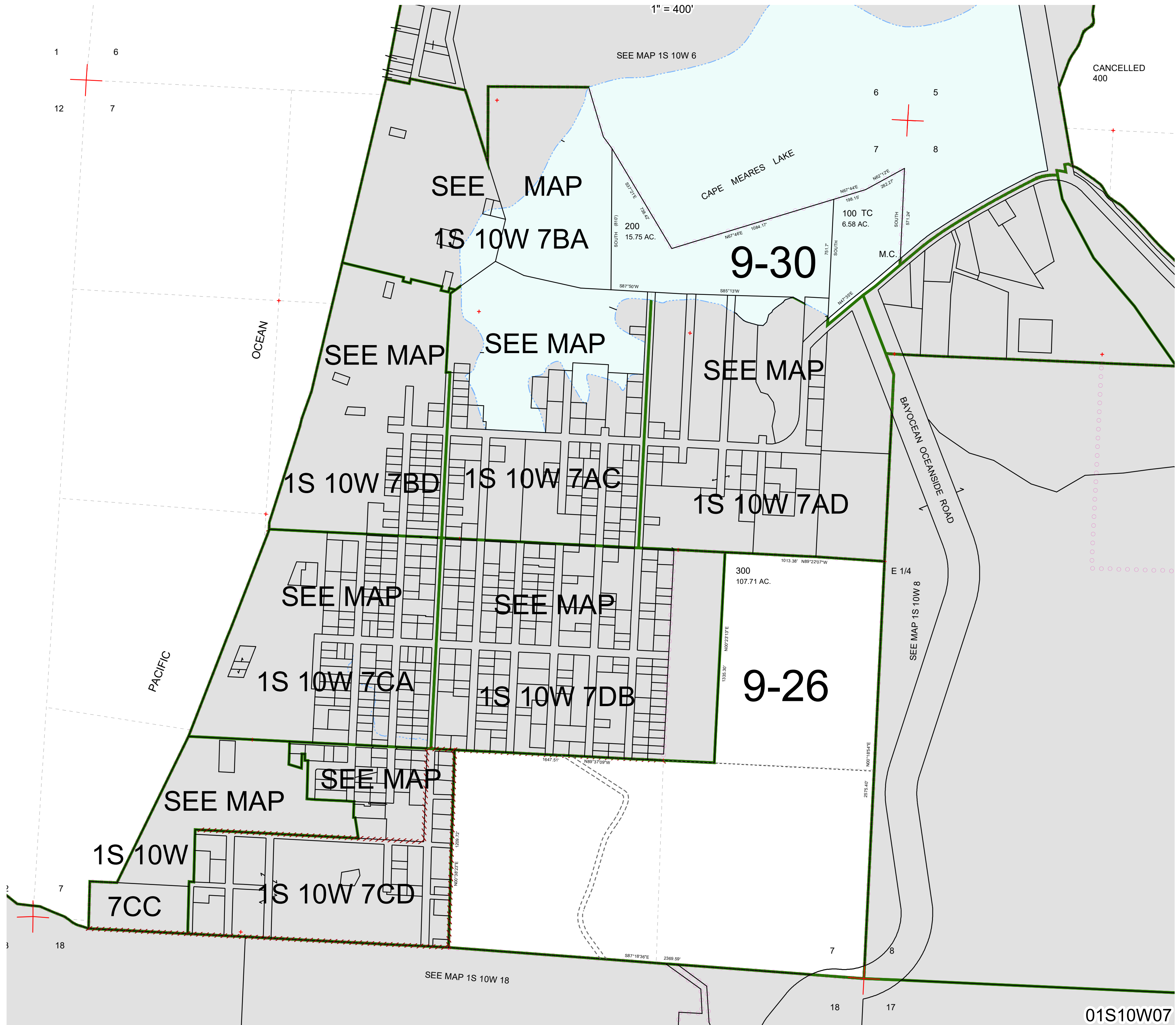
THIS MAP WAS PREPARED FOR ASSESSMENT PURPOSE ONLY



SECTION 7 T.1S. R.10W. W.M.
TILLAMOOK COUNTY

01S10W07

1" = 400'



CANCELLED 400

SEE MAP
1S 10W 7BA

9-30

SEE MAP

SEE MAP

SEE MAP

1S 10W 7BD

1S 10W 7AC

1S 10W 7AD

SEE MAP

SEE MAP

1S 10W 7CA

1S 10W 7DB

9-26

SEE MAP

SEE MAP

1S 10W
7CC

1S 10W 7CD

SEE MAP 1S 10W 18

01S10W07

Revised 7/5/24, WS