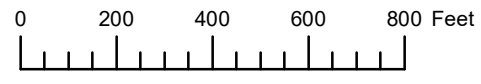


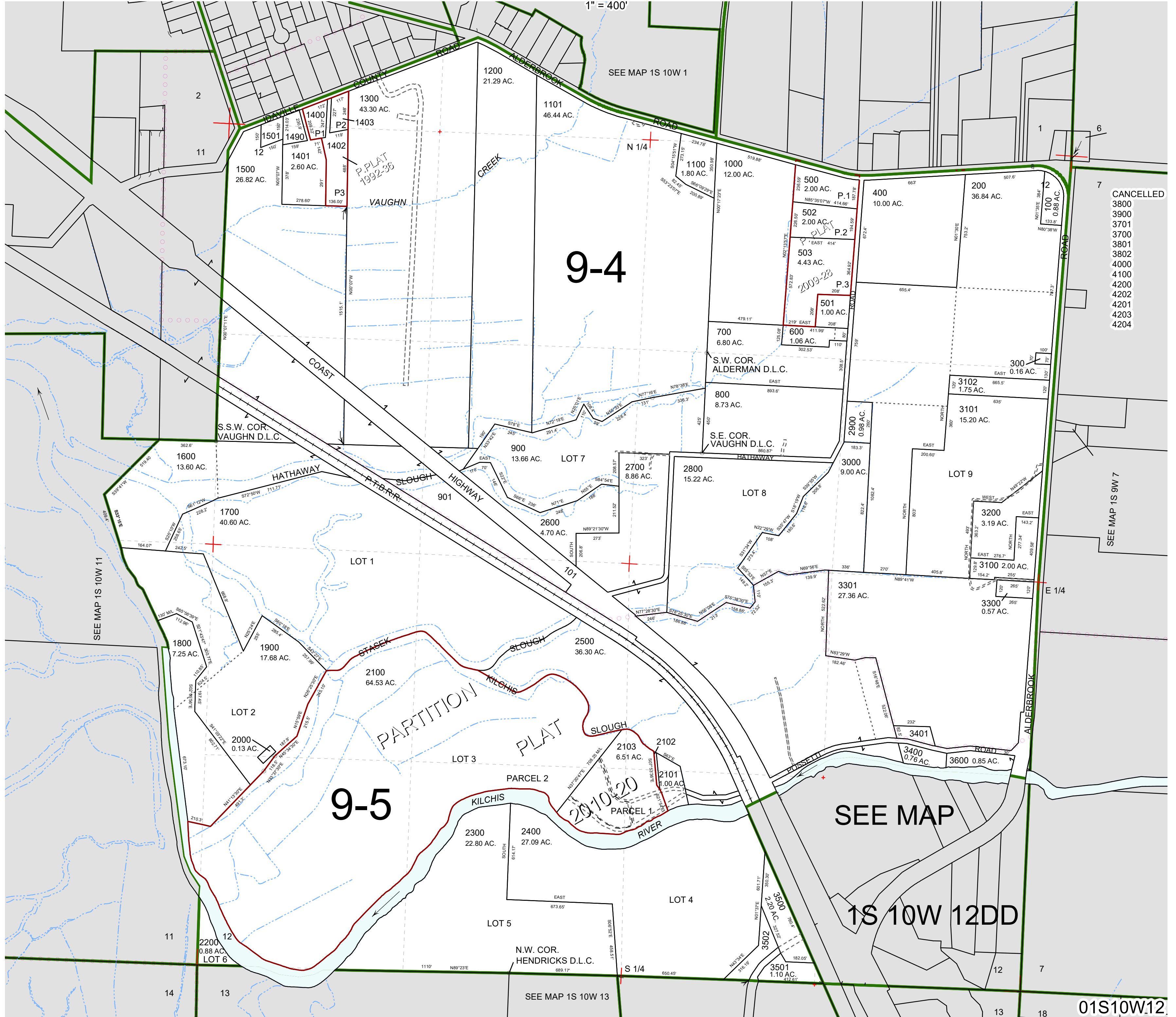
THIS MAP WAS PREPARED FOR ASSESSMENT PURPOSE ONLY



SECTION 12 T.1S. R.10W. W.M.

TILLAMOOK COUNTY

01S10W12



- CANCELLED
- 3800
- 3900
- 3701
- 3700
- 3801
- 3802
- 4000
- 4100
- 4200
- 4201
- 4203
- 4204

01S10W12

Revised 4/11/19, WS