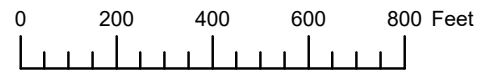


THIS MAP WAS PREPARED FOR ASSESSMENT PURPOSE ONLY

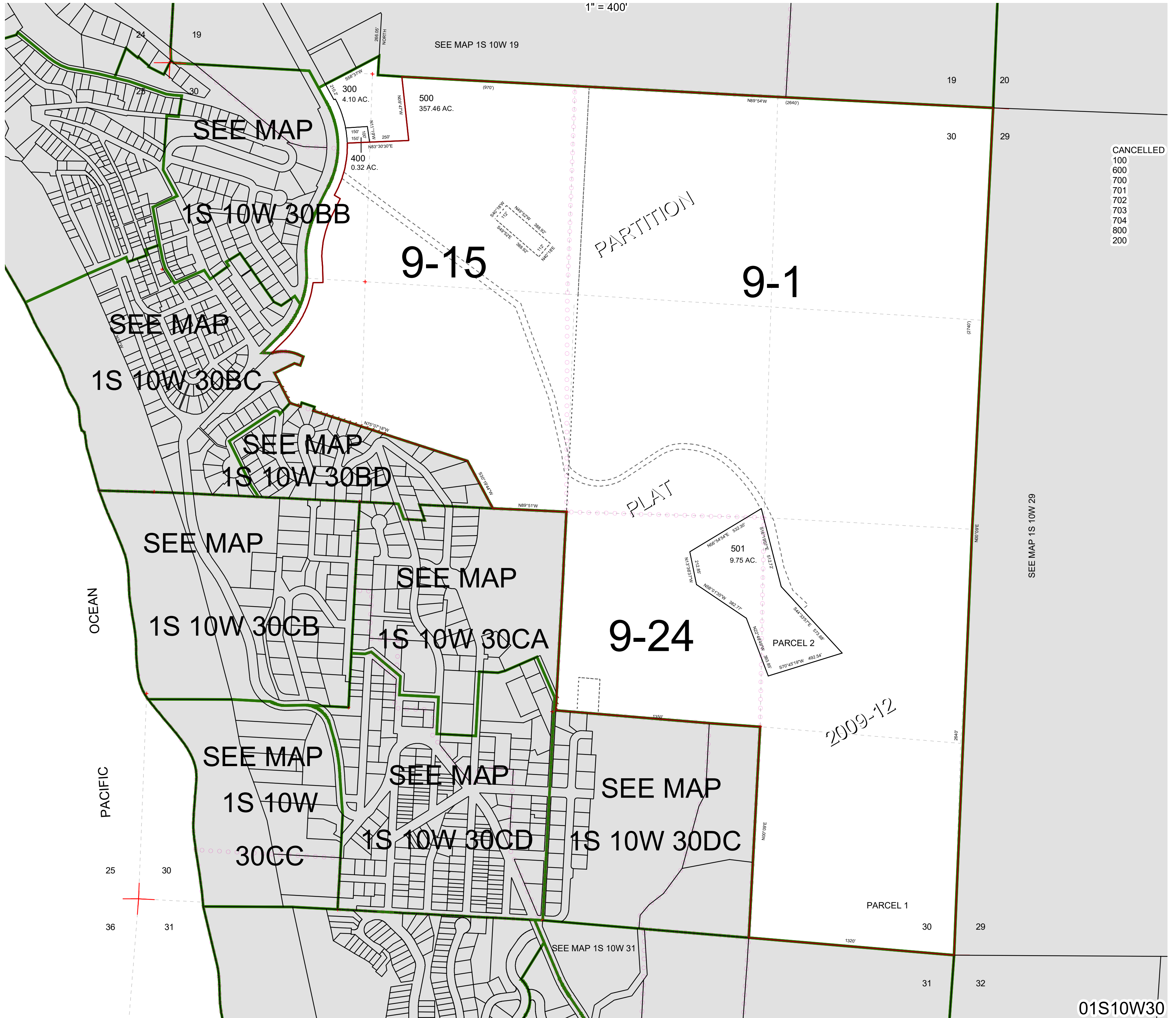


SECTION 30 T.1S. R.10W. W.M.

TILLAMOOK COUNTY

1" = 400'

01S10W30



CANCELLED
100
600
700
701
702
703
704
800
200

SEE MAP 1S 10W 29

SEE MAP 1S 10W 31

01S10W30

Revised 8/12/22, WS