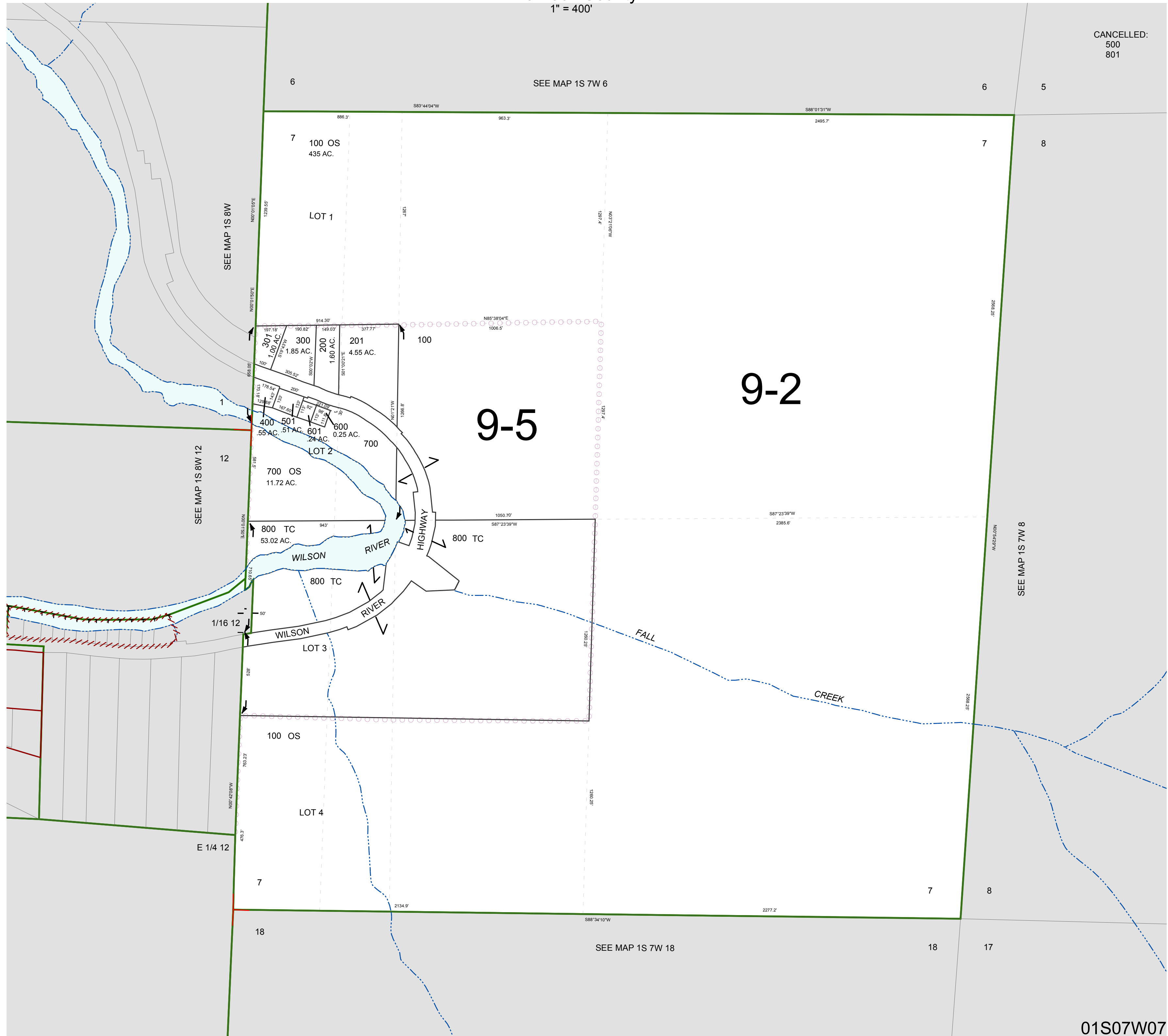


FOR ASSESSMENT AND TAXATION ONLY, NOT SUITABLE FOR LEGAL, ENGINEERING, OR SURVEY PURPOSES

SECTION 7 T.1S. R.7W. W.M.
Tillamook County
1" = 400'

01S07W07

CANCELLED:
500
801



01S07W07
REVISED 03/02/18, WS