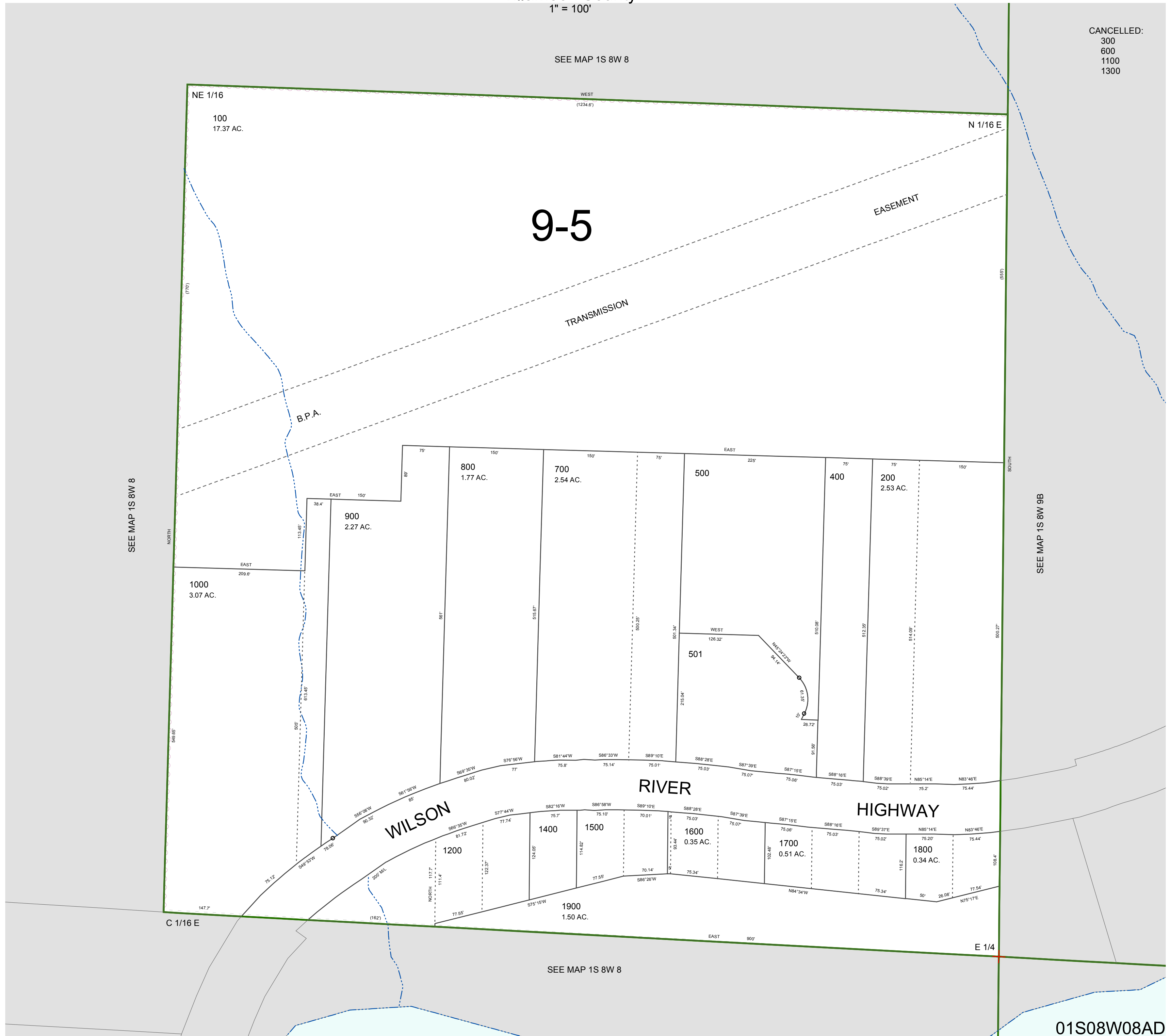


FOR ASSESSMENT AND TAXATION ONLY, NOT SUITABLE FOR LEGAL, ENGINEERING, OR SURVEY PURPOSES

S.E. 1/4 N.E. 1/4 SEC. 8 T.1S. R.8W. W.M.
Tillamook County
1" = 100'

01S08W08AD

CANCELLED:
300
600
1100
1300



01S08W08AD
REVISED 2/18/16, WS