

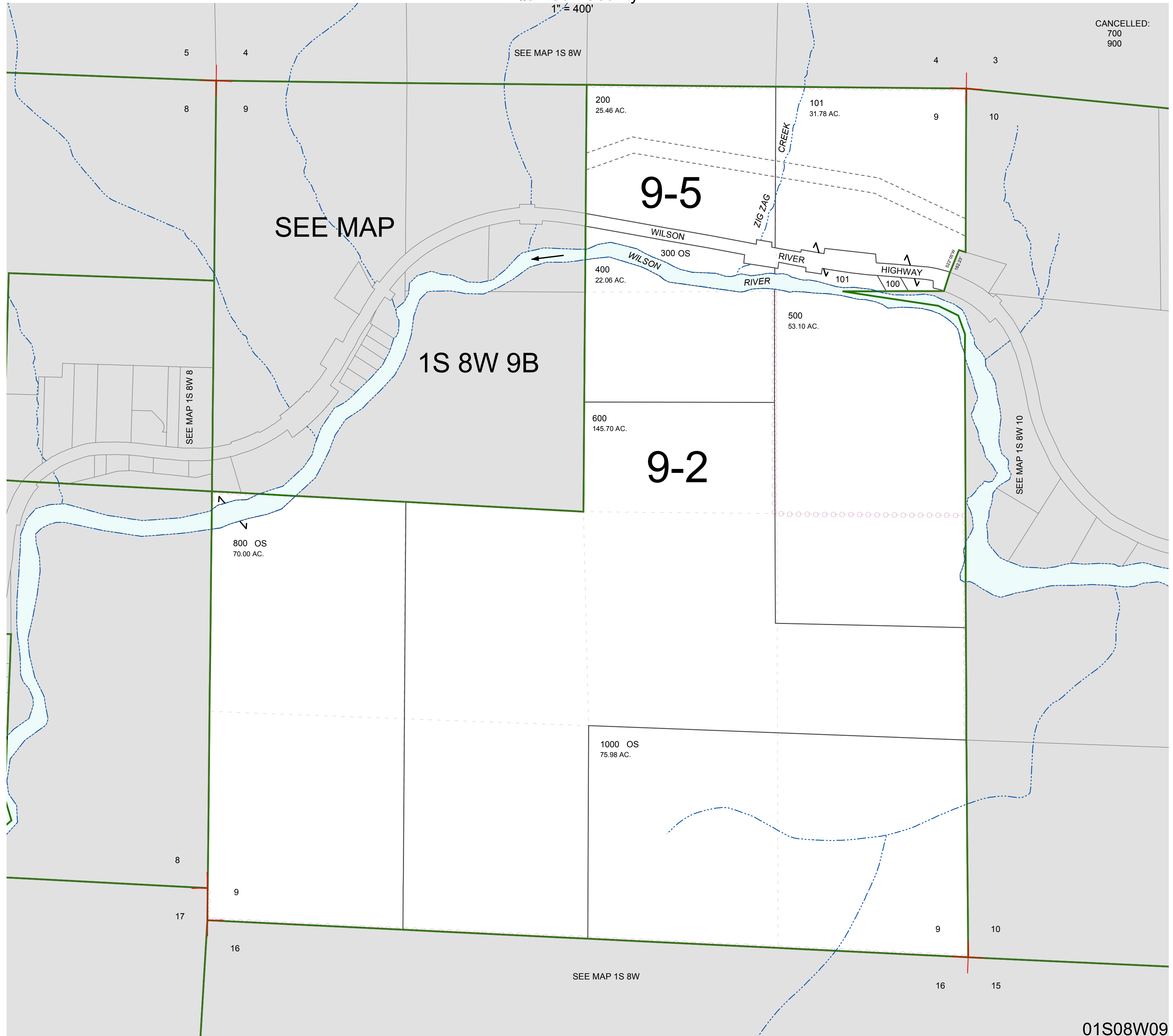
FOR ASSESSMENT AND TAXATION ONLY. NOT SUITABLE FOR
LEGAL, ENGINEERING, OR SURVEY PURPOSES

SECTION 9 T.1S. R.8W. W.M.
Tillamook County

01S08W09

1" = 400'

CANCELLED:
700
900



01S08W09
REVISED 2/18/16, WS