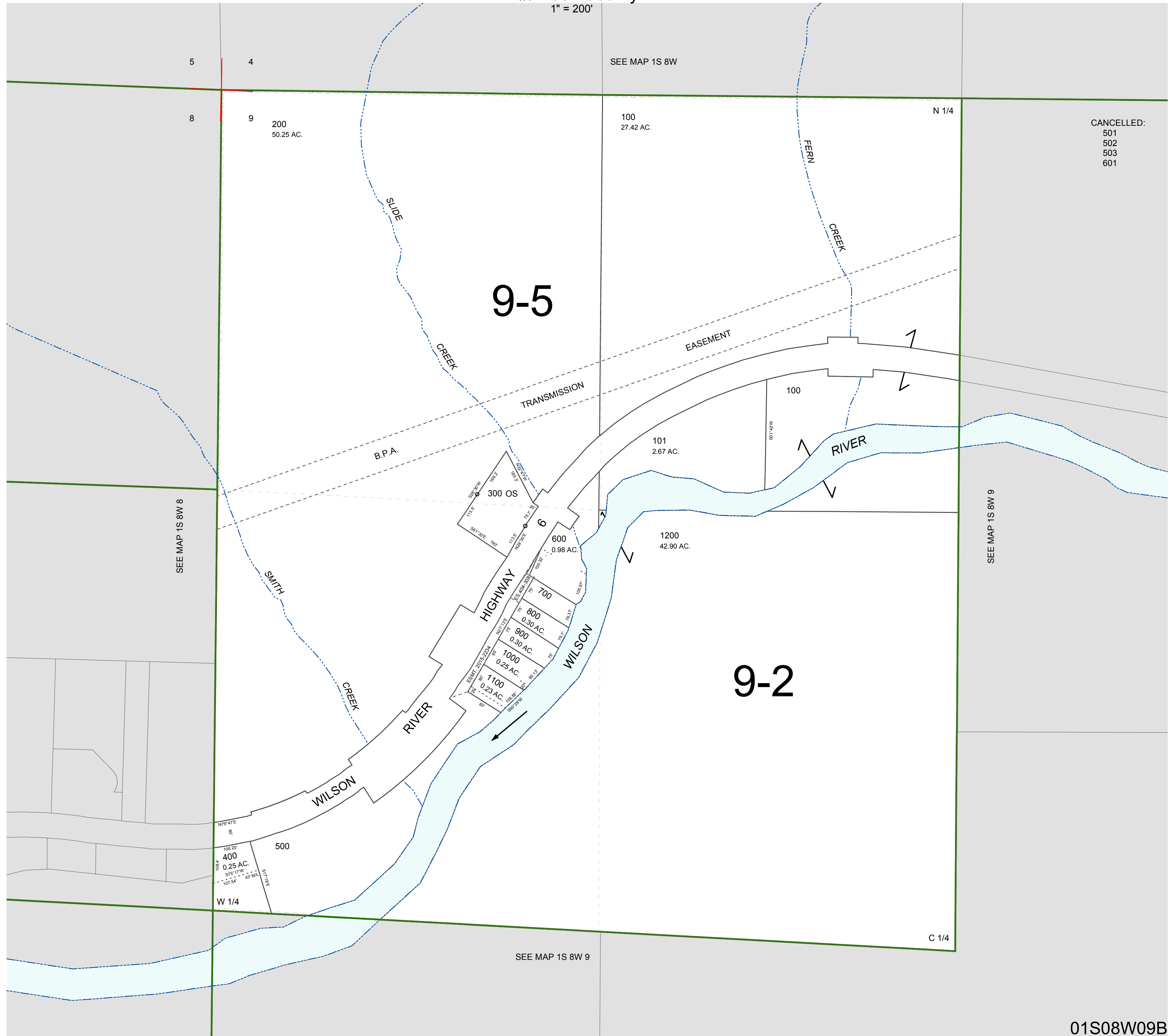


FOR ASSESSMENT AND TAXATION ONLY, NOT SUITABLE FOR LEGAL, ENGINEERING, OR SURVEY PURPOSES

N.W. 1/4 SEC. 9 T. 1S. R. 8W. W.M.
Tillamook County

01S08W09B

1" = 200'



CANCELLED:
501
502
503
601

01S08W09B
REVISED 2/18/16, WS