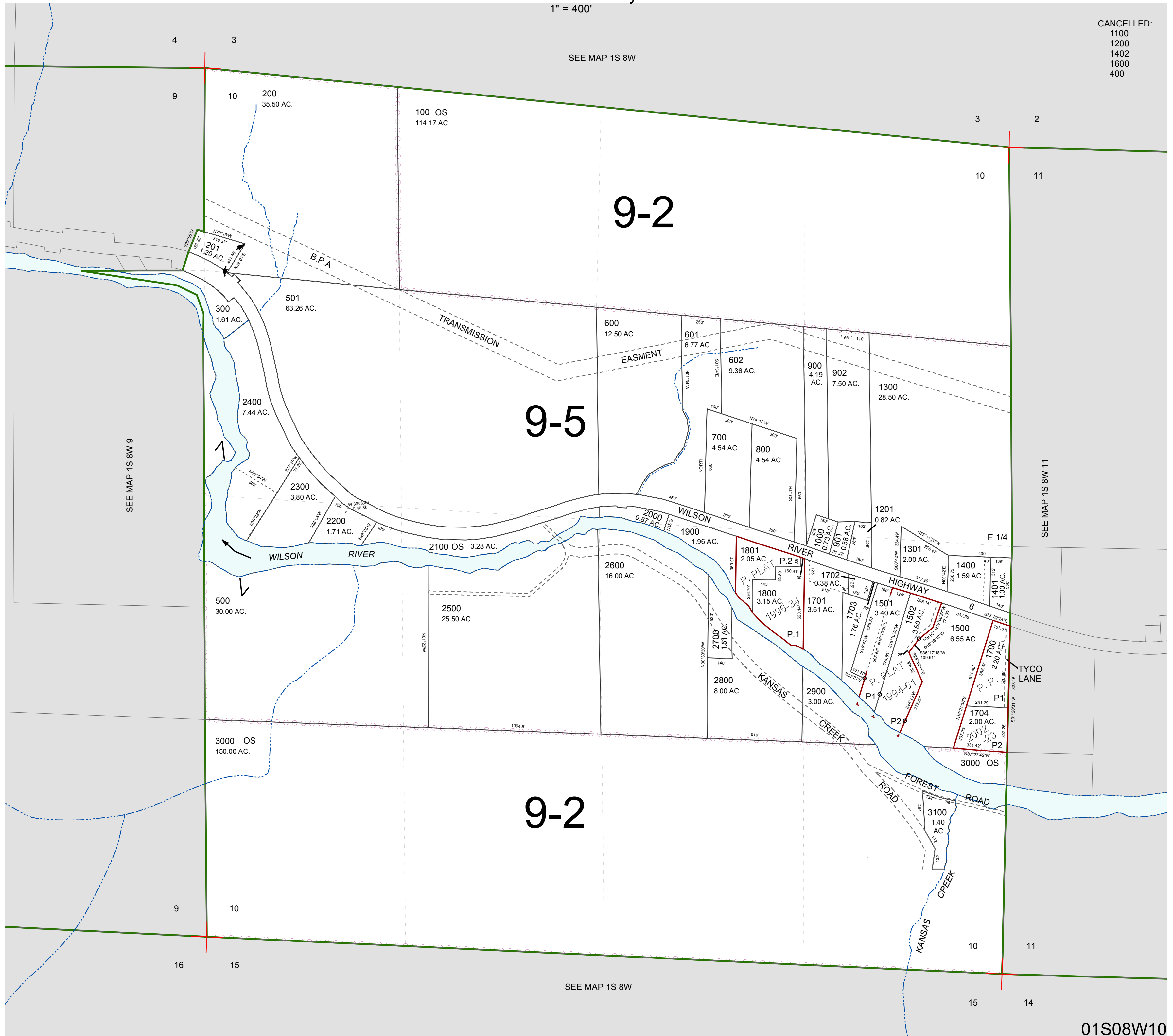


FOR ASSESSMENT AND TAXATION ONLY, NOT SUITABLE FOR LEGAL, ENGINEERING, OR SURVEY PURPOSES

SECTION 10 T.1S. R.8W. W.M.
Tillamook County
1" = 400'

01S08W10

CANCELLED:
1100
1200
1402
1600
400



01S08W10
REVISED 5/26/16, WS