

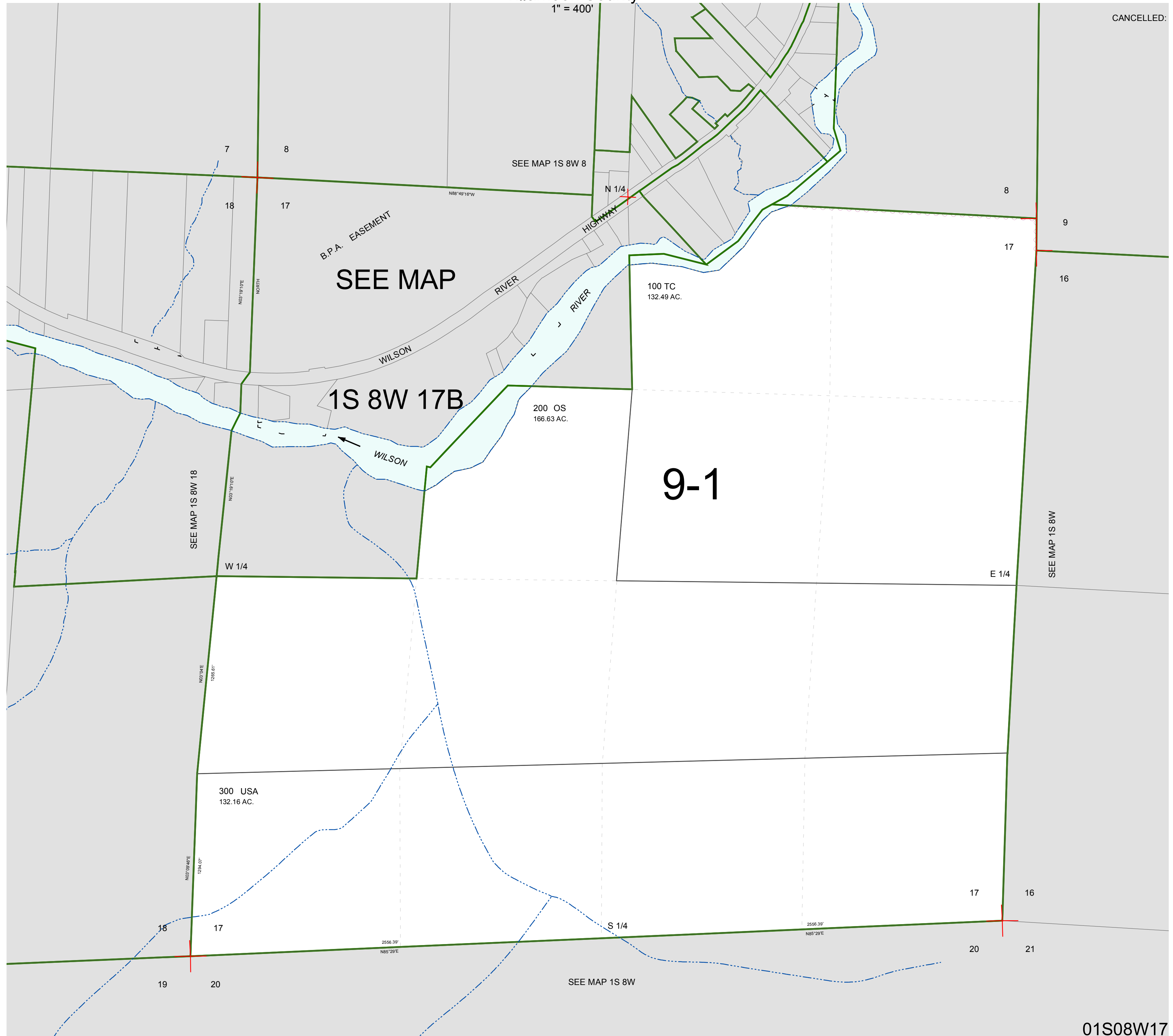
FOR ASSESSMENT AND TAXATION ONLY, NOT SUITABLE FOR LEGAL, ENGINEERING, OR SURVEY PURPOSES

SECTION 17 T.1S. R.8W. W.M.
Tillamook County

01S08W17

CANCELLED:

1" = 400'



01S08W17

REVISED 2/18/16, WS