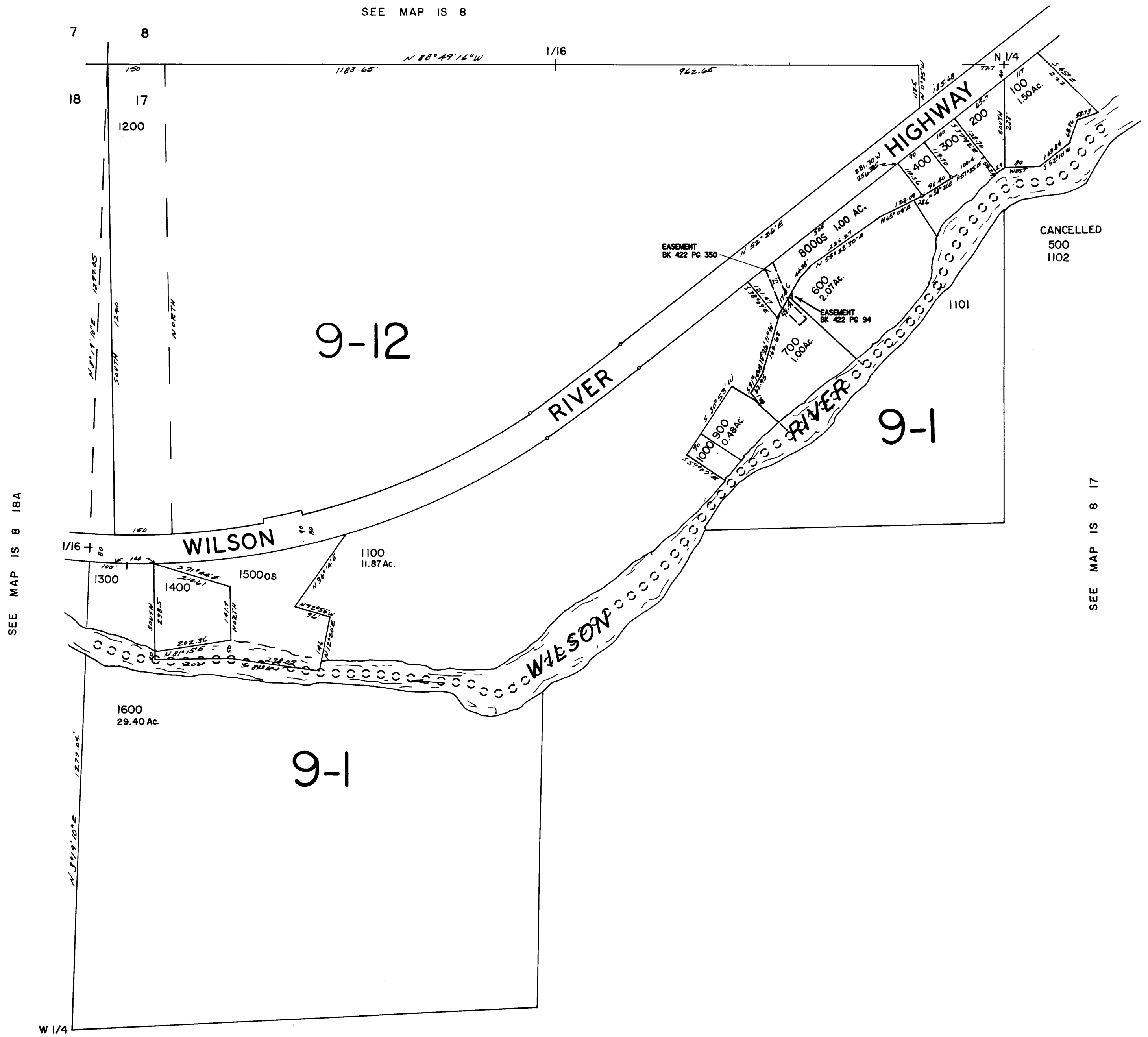


THIS MAP WAS PREPARED FOR
ASSESSMENT PURPOSE ONLY

NW1/4 SEC.17 T.1S. R.8W.W.M.
TILLAMOOK COUNTY
1" = 200'

IS 8 17B



SEE MAP IS 8 17

IS 8 17B

REVISED 01/08/01, KA