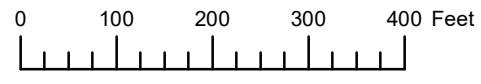


THIS MAP WAS PREPARED FOR ASSESSMENT PURPOSE ONLY

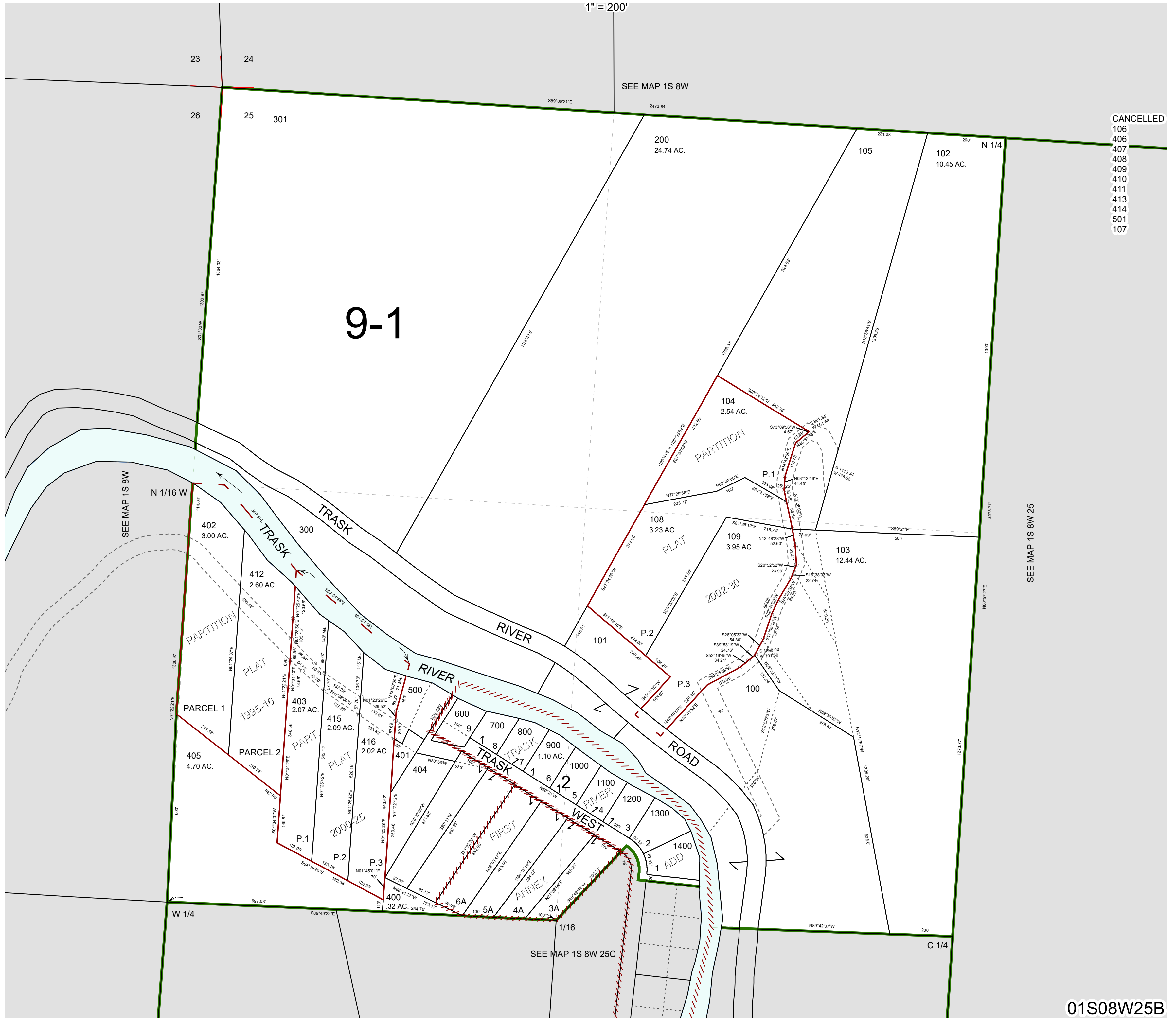


N.W. 1/4 SEC. 25 T. 1S. R. 8W. W.M.

TILLAMOOK COUNTY

01S08W25B

1" = 200'



CANCELLED
106
406
407
408
409
410
411
413
414
501
107

01S08W25B

Revised 05/14/20, WS