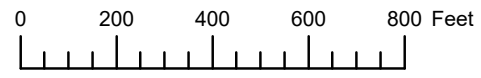
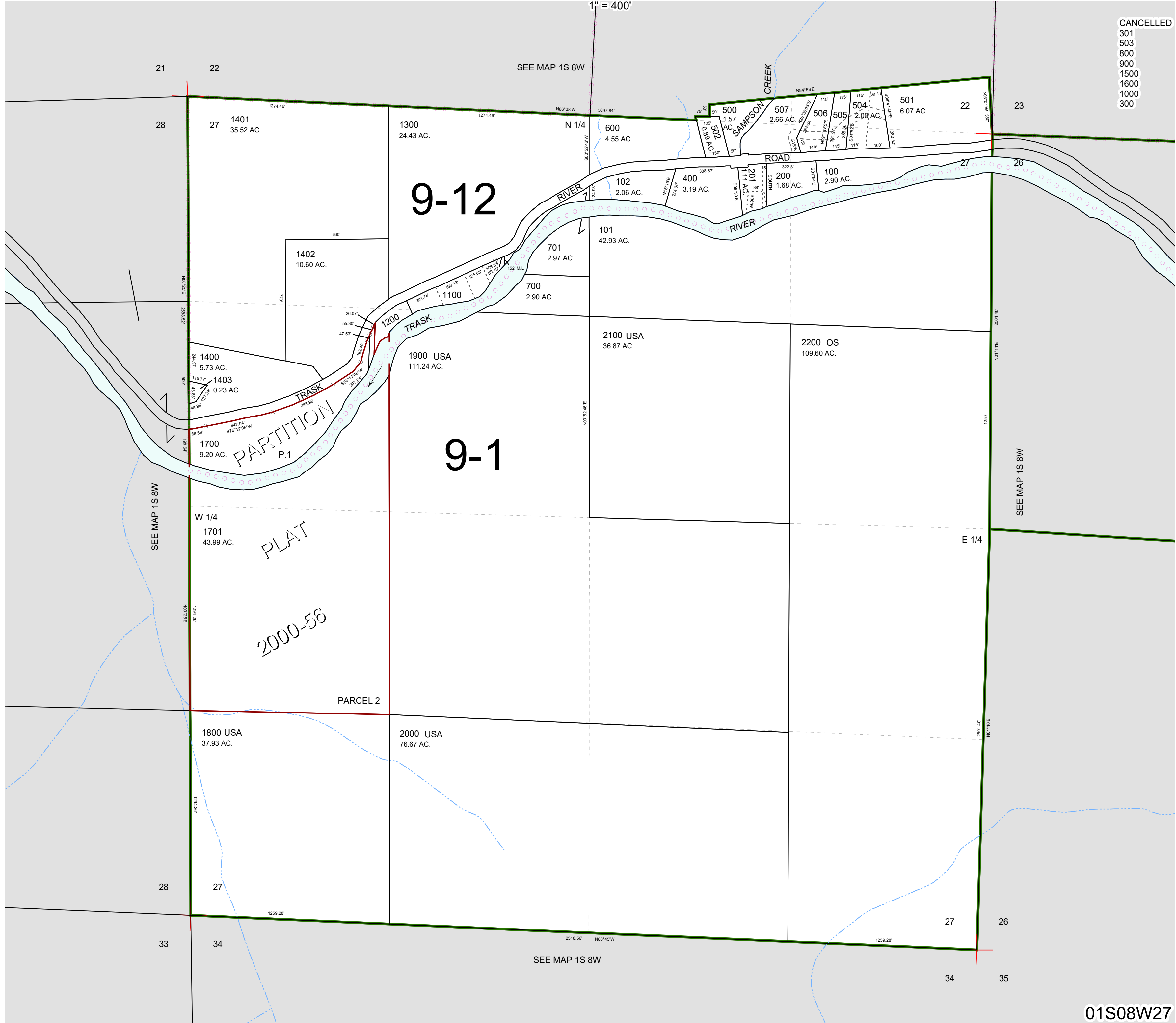


THIS MAP WAS PREPARED FOR ASSESSMENT PURPOSE ONLY



SECTION 27 T.1S. R.8W. W.M.
TILLAMOOK COUNTY

01S08W27



- CANCELLED
- 301
- 503
- 800
- 900
- 1500
- 1600
- 1000
- 300

01S08W27

Revised 5/31/23, WS