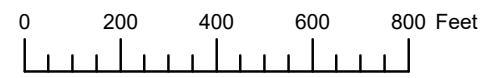
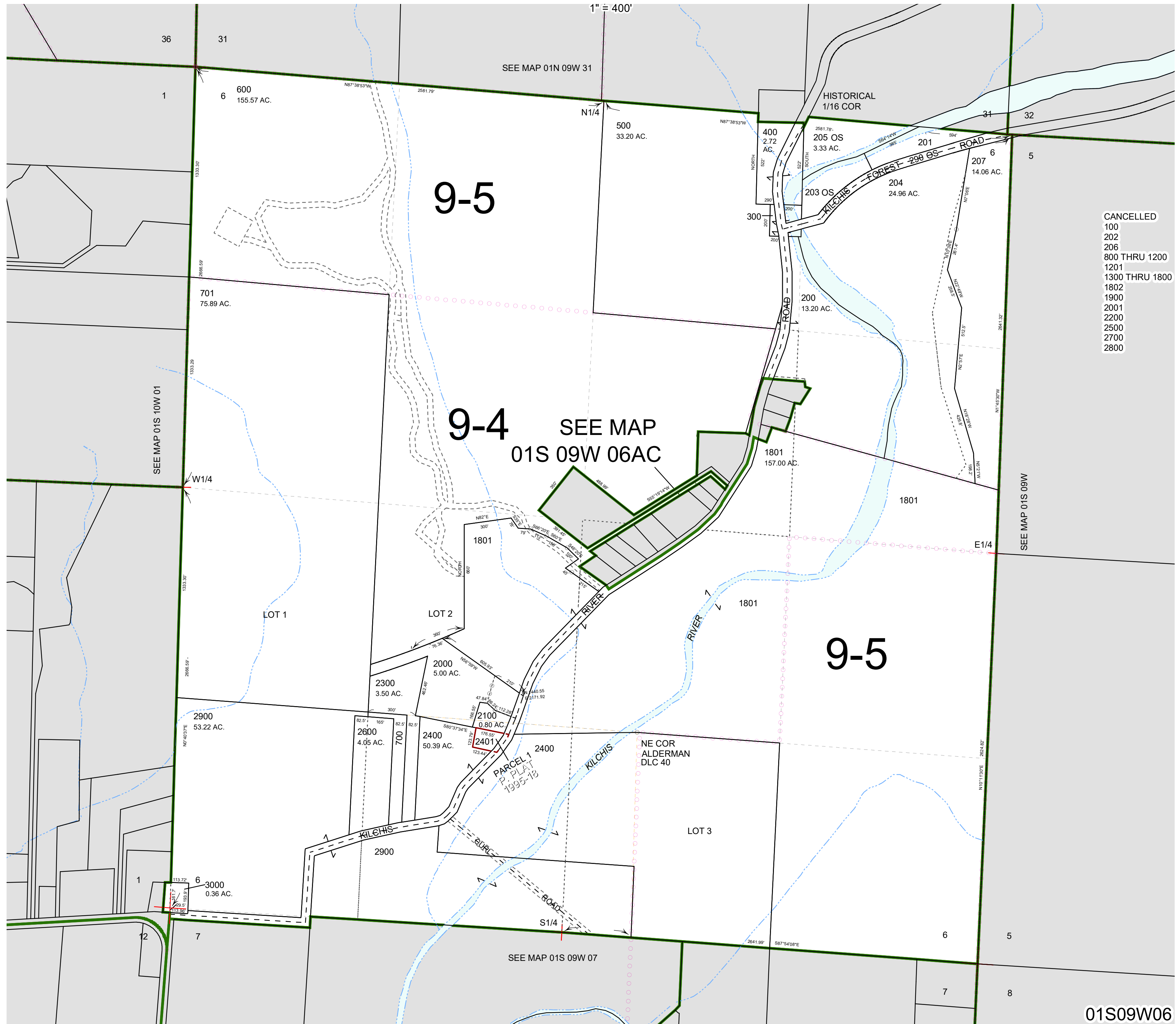


THIS MAP WAS PREPARED FOR ASSESSMENT PURPOSE ONLY



SECTION 6 T.1S. R.9W. W.M.  
TILLAMOOK COUNTY

01S09W06



- CANCELLED
- 100
- 202
- 206
- 800 THRU 1200
- 1201
- 1300 THRU 1800
- 1802
- 1900
- 2001
- 2200
- 2500
- 2700
- 2800

01S09W06

Revised 12/15/21, WS