

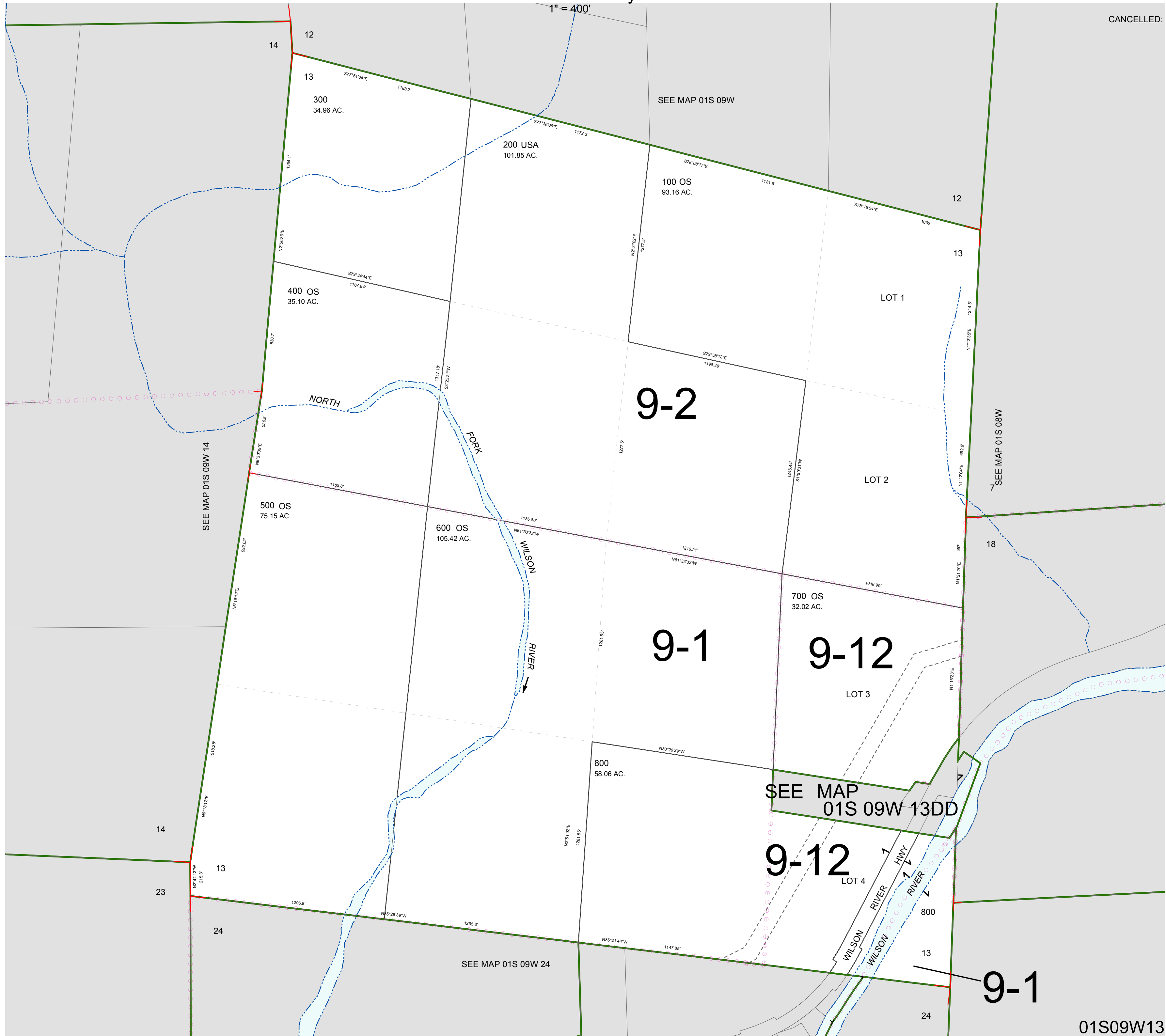
FOR ASSESSMENT AND TAXATION ONLY, NOT SUITABLE FOR LEGAL, ENGINEERING, OR SURVEY PURPOSES

SECTION 13 T.1S. R.9W. W.M.  
Tillamook County

01S09W13

CANCELLED:

1" = 400'



01S09W13  
REVISED 2/18/16, WS