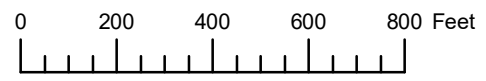


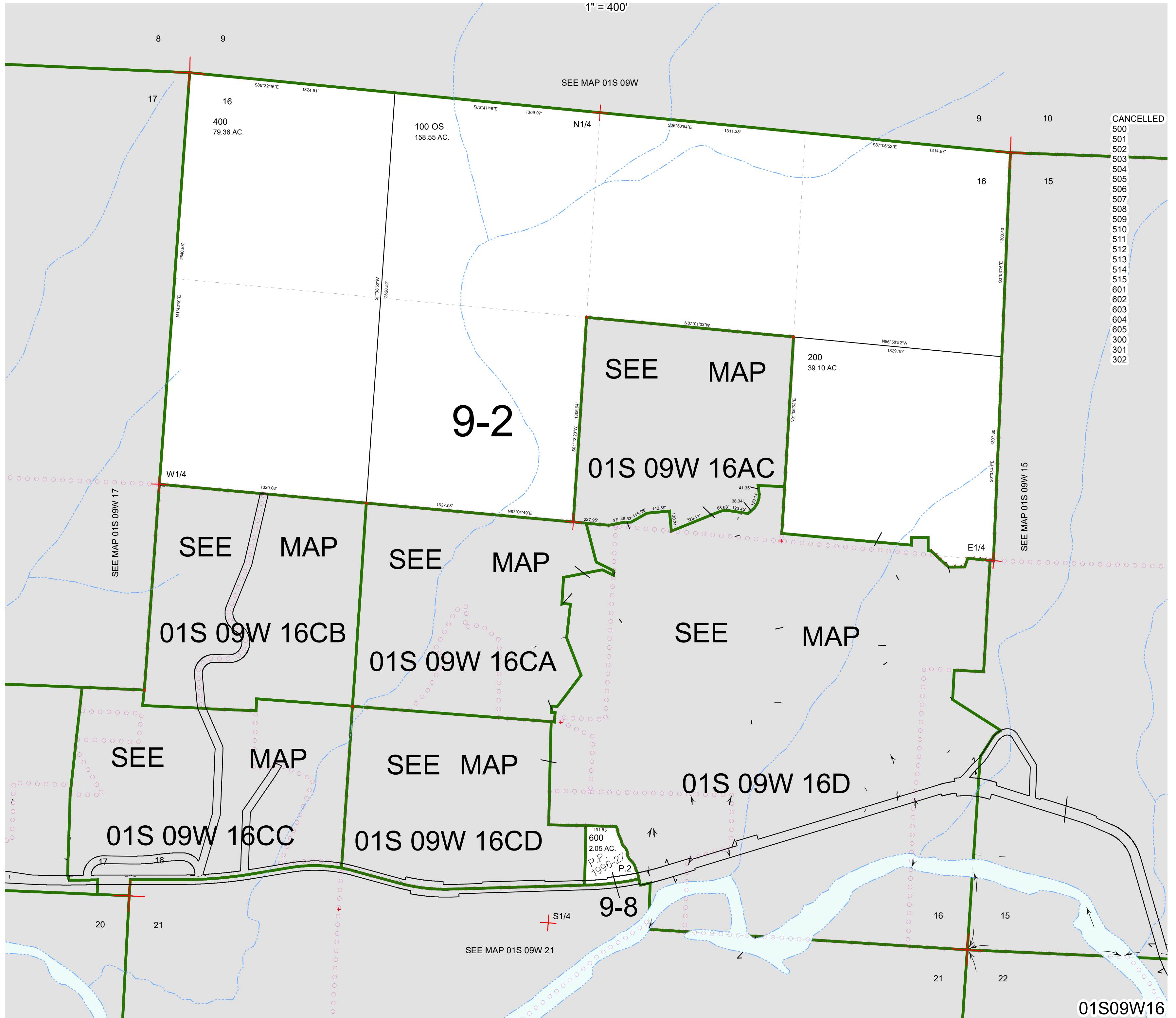
THIS MAP WAS PREPARED FOR ASSESSMENT PURPOSE ONLY



SECTION 16 T.1S. R.9W. W.M.
TILLAMOOK COUNTY

01S09W16

1" = 400'



CANCELLED
500
501
502
503
504
505
506
507
508
509
510
511
512
513
514
515
601
602
603
604
605
300
301
302

191.50
600
2.05 AC.
P.P.
1998-21
P.2

01S09W16

Revised 08/07/20, WS