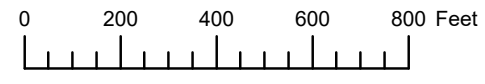


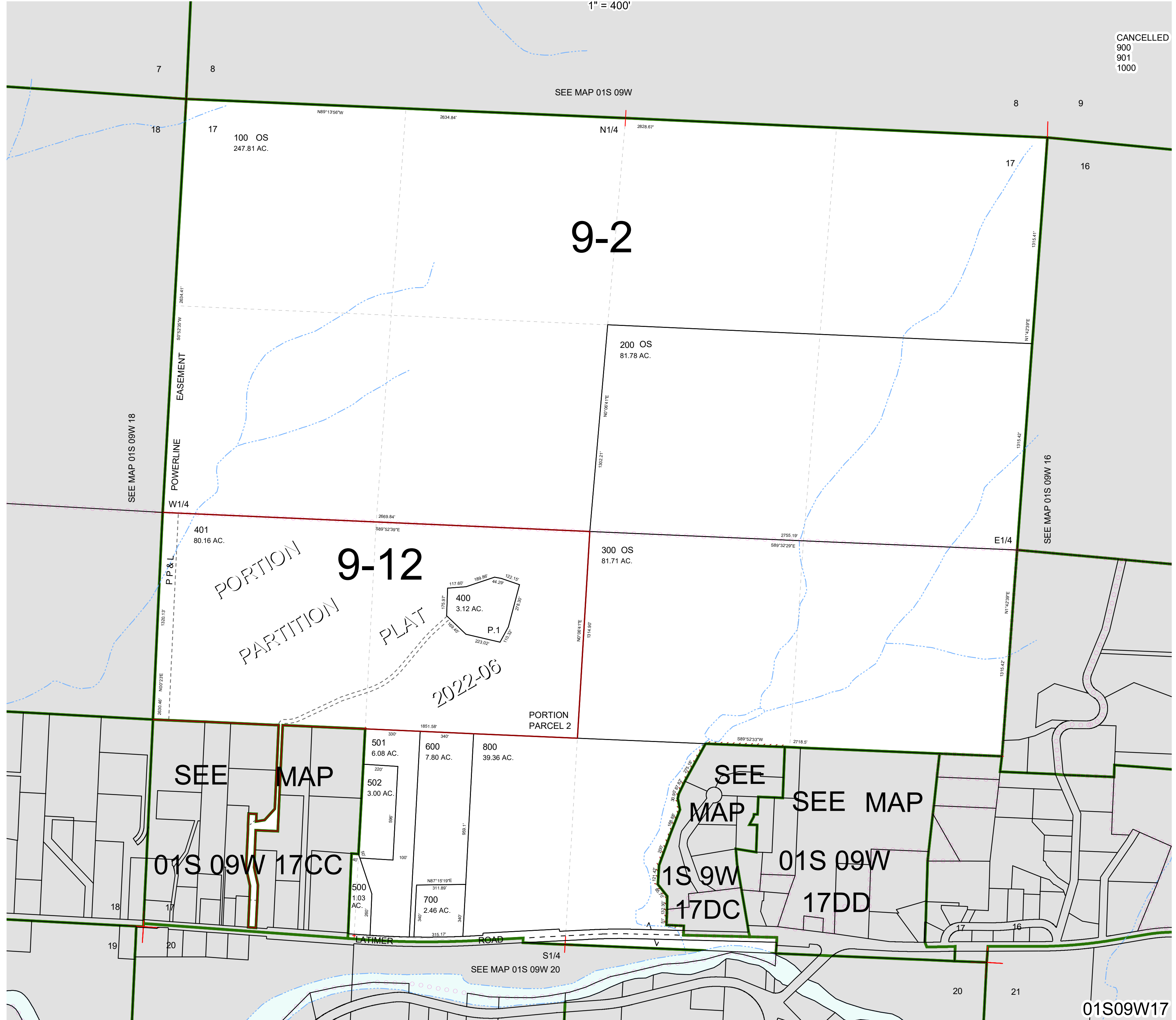
THIS MAP WAS PREPARED FOR ASSESSMENT PURPOSE ONLY



SECTION 17 T.1S. R.9W. W.M.
TILLAMOOK COUNTY
1" = 400'

01S09W17

CANCELLED
900
901
1000



SEE MAP
01S 09W 17CC

SEE MAP
SEE MAP
1S 9W 17DC
01S 09W 17DD

01S09W17
Revised 5/11/22, WS