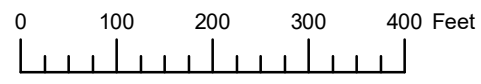


THIS MAP WAS PREPARED FOR ASSESSMENT PURPOSE ONLY

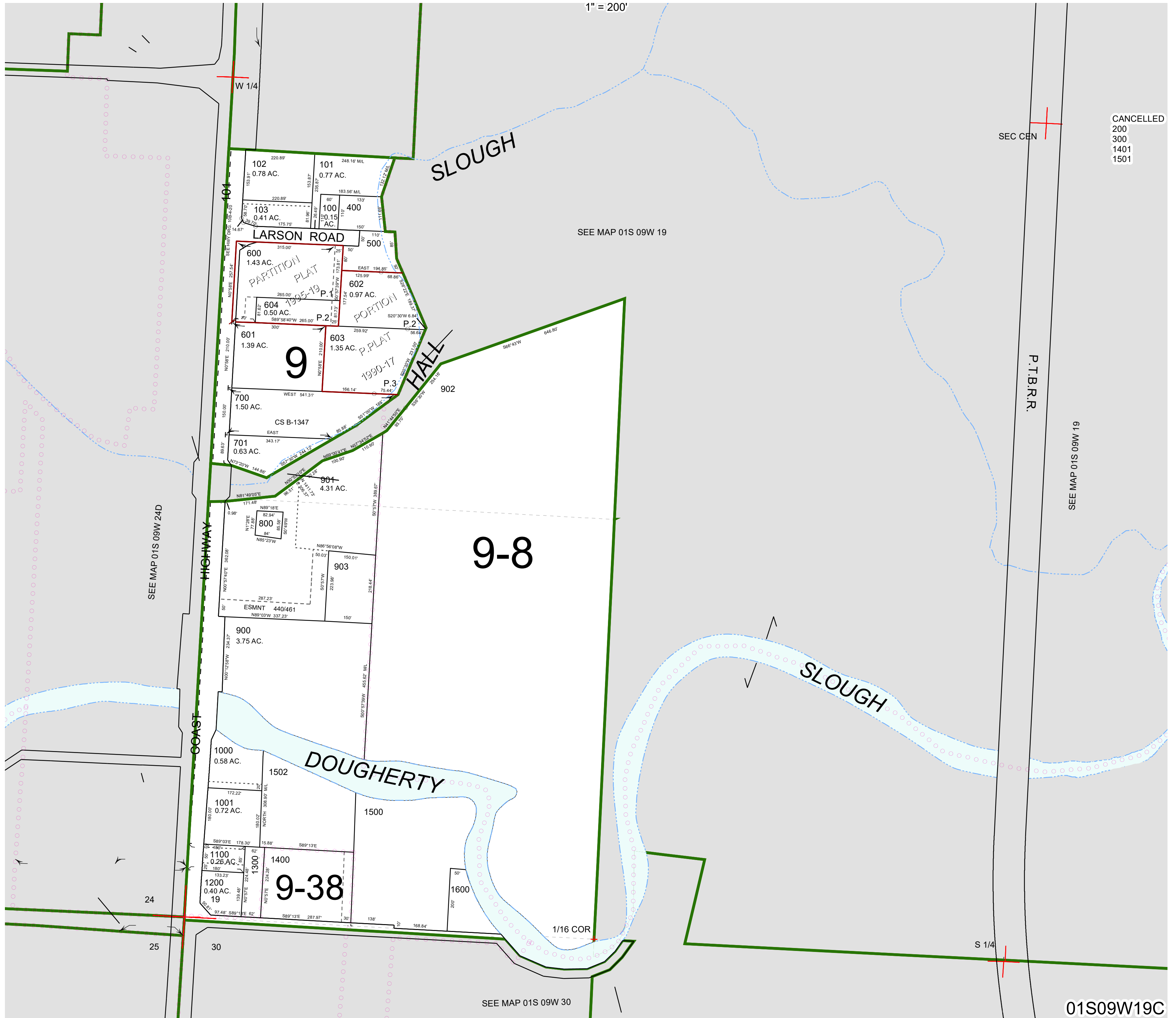


S.W. 1/4 SEC. 19 T. 1S. R. 9W. W.M.

TILLAMOOK COUNTY

01S09W19C

1" = 200'



CANCELLED
200
300
1401
1501

SEC CEN

P.T.B.R.R.

SEE MAP 01S 09W 19

SEE MAP 01S 09W 24D

SEE MAP 01S 09W 30

01S09W19C

Revised 08/07/20, WS