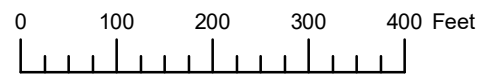


THIS MAP WAS PREPARED FOR ASSESSMENT PURPOSE ONLY

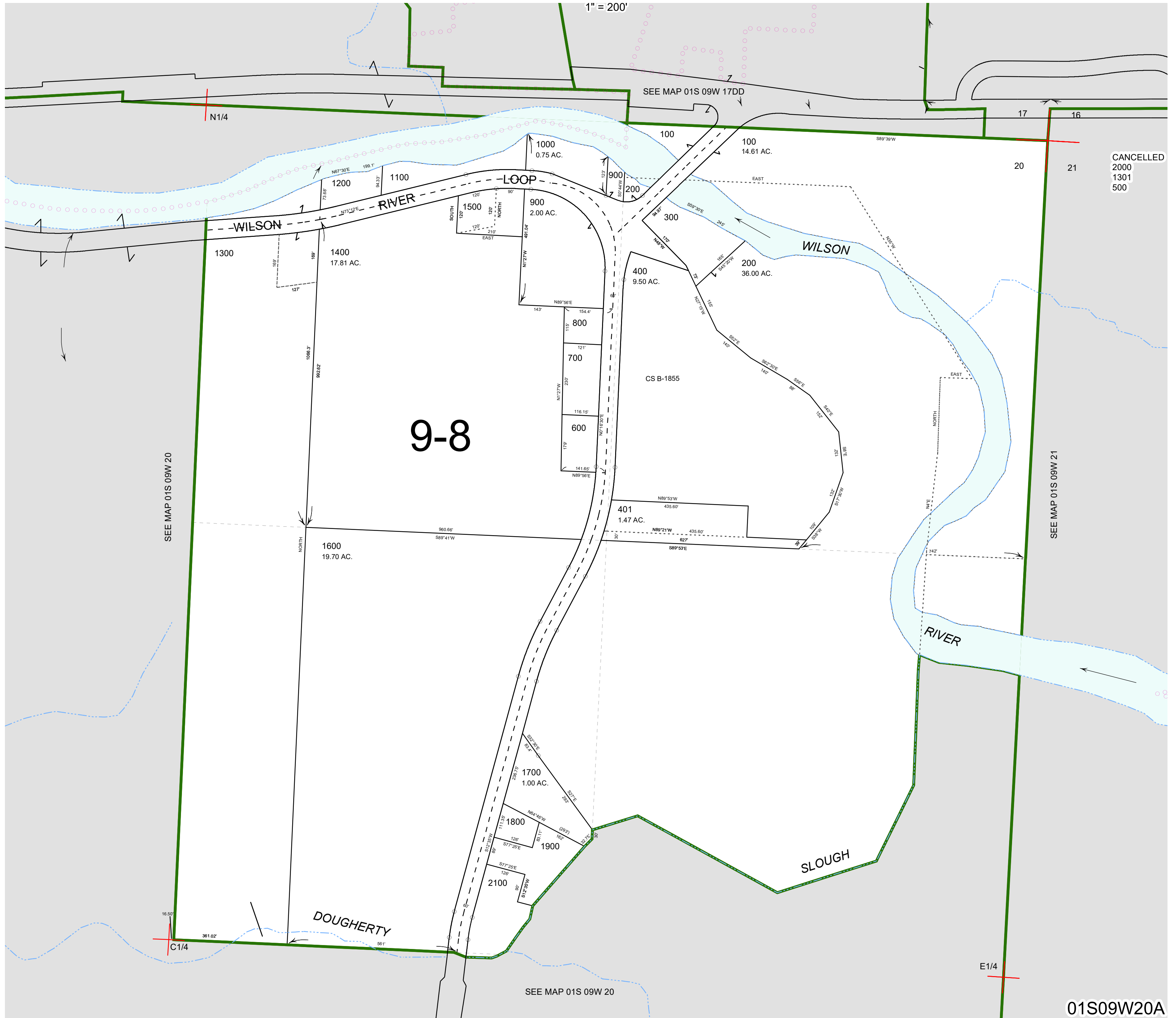


N.E. 1/4 SEC. 20 T. 1S. R. 9W. W.M.

TILLAMOOK COUNTY

01S09W20A

1" = 200'



CANCELLED  
2000  
1301  
500

01S09W20A

Revised 08/07/20, WS