

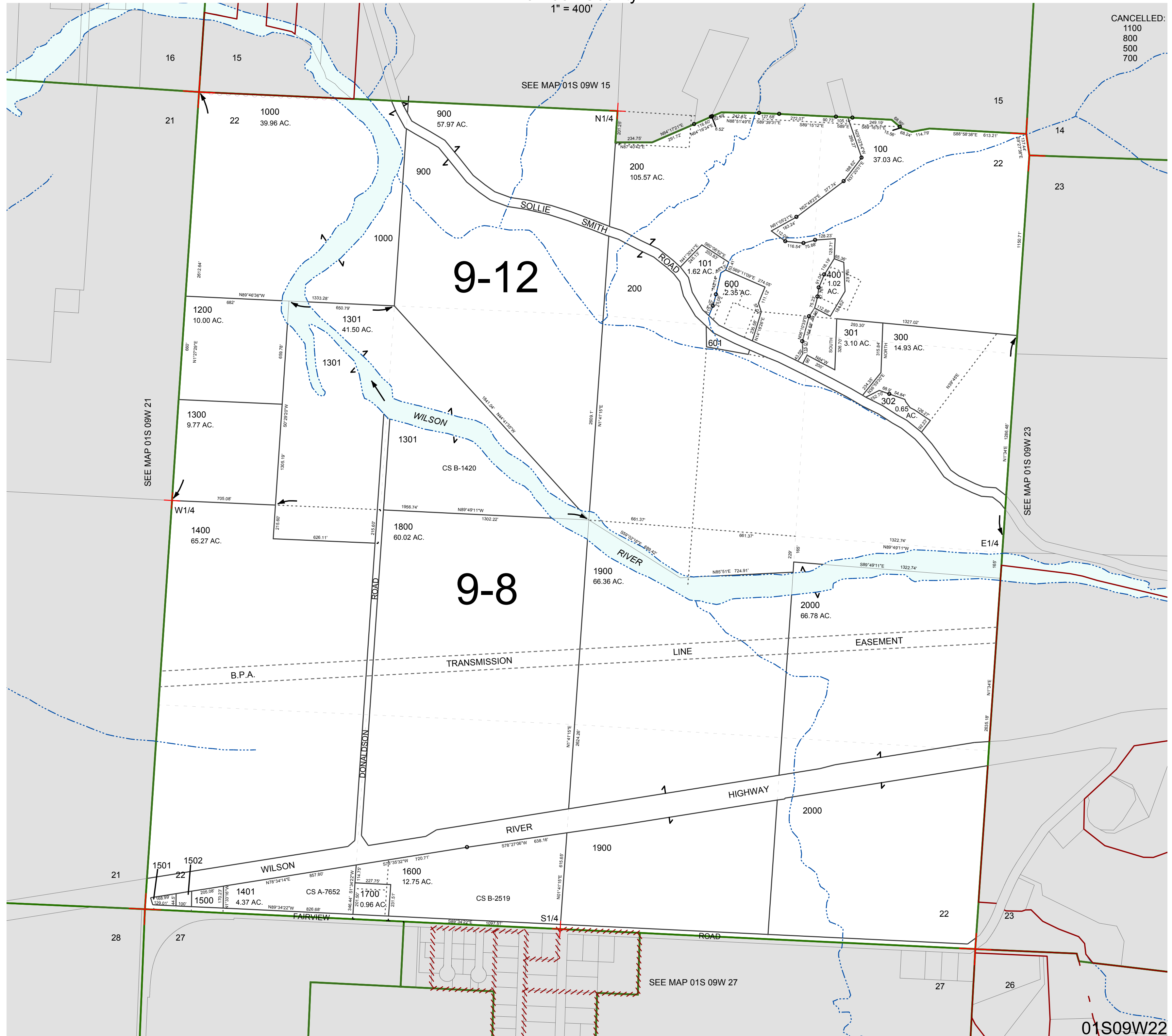
FOR ASSESSMENT AND TAXATION ONLY, NOT SUITABLE FOR LEGAL, ENGINEERING, OR SURVEY PURPOSES

SECTION 22 T.1S. R.9W. W.M.
Tillamook County

01S09W22

1" = 400'

CANCELLED:
1100
800
500
700



01S09W22
REVISED 6/2/17, WS