

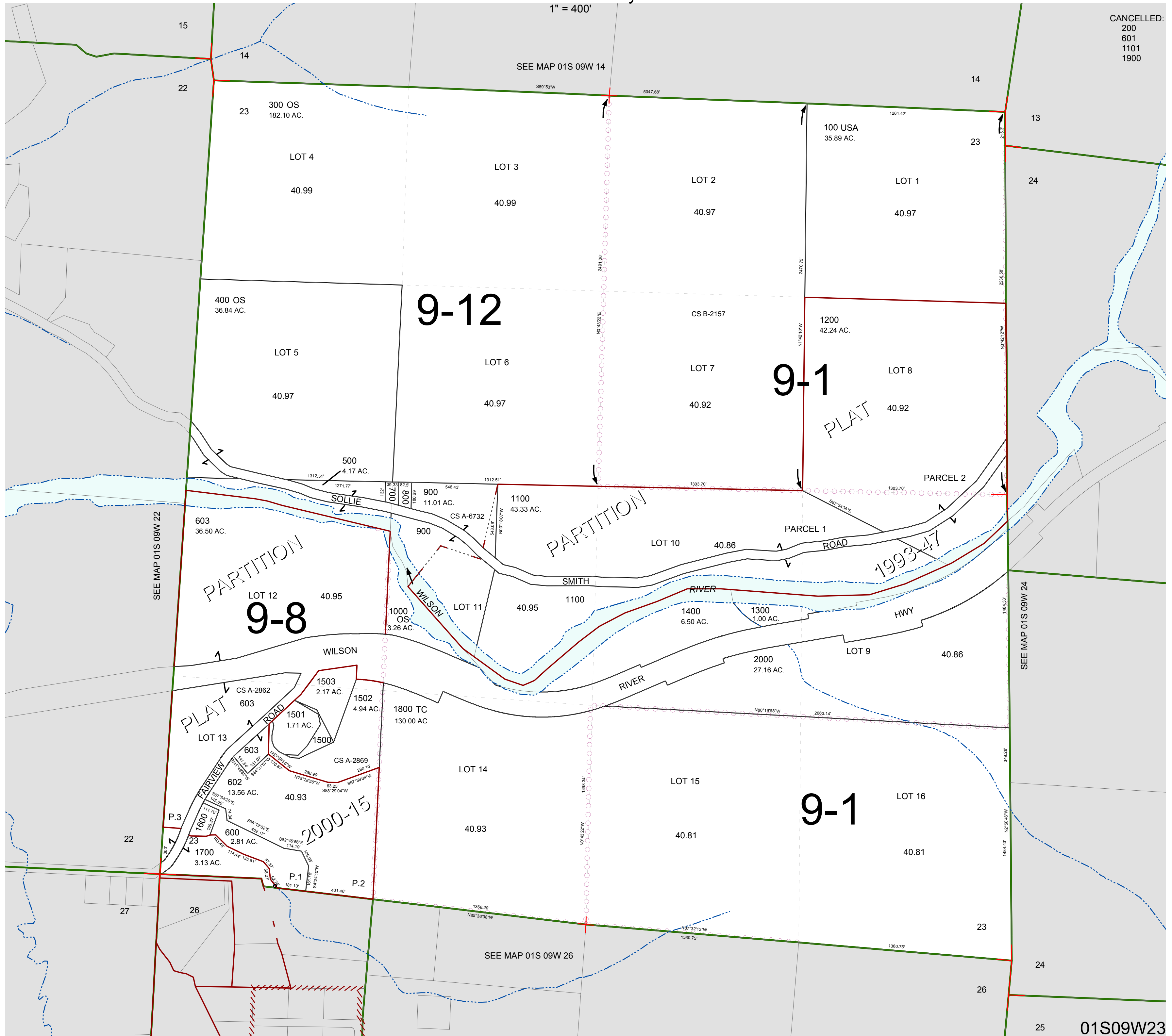
FOR ASSESSMENT AND TAXATION ONLY, NOT SUITABLE FOR LEGAL, ENGINEERING, OR SURVEY PURPOSES

SECTION 23 T.1S. R.9W. W.M.
Tillamook County

01S09W23

1" = 400'

CANCELLED:
200
601
1101
1900



01S09W23
REVISED 6/2/17, WS