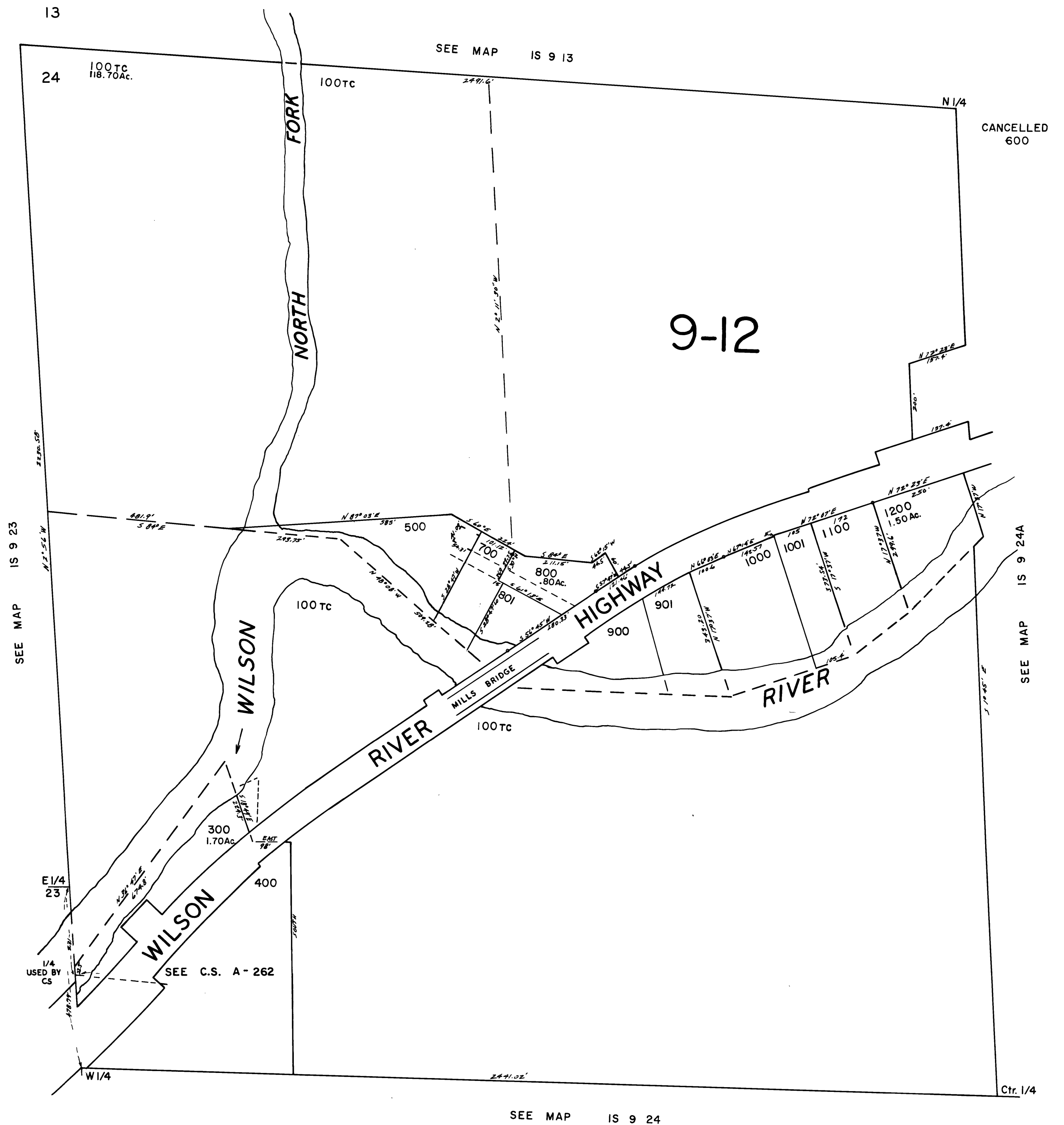


THIS MAP WAS PREPARED FOR
ASSESSMENT PURPOSE ONLY

NW1/4 SEC.24 T.1S. R.9W.W.M.
TILLAMOOK COUNTY
1" = 200'

IS 9 24B



SEE MAP IS 9 24

IS 9 24B

REVISED 7-1-98, CC