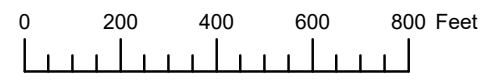


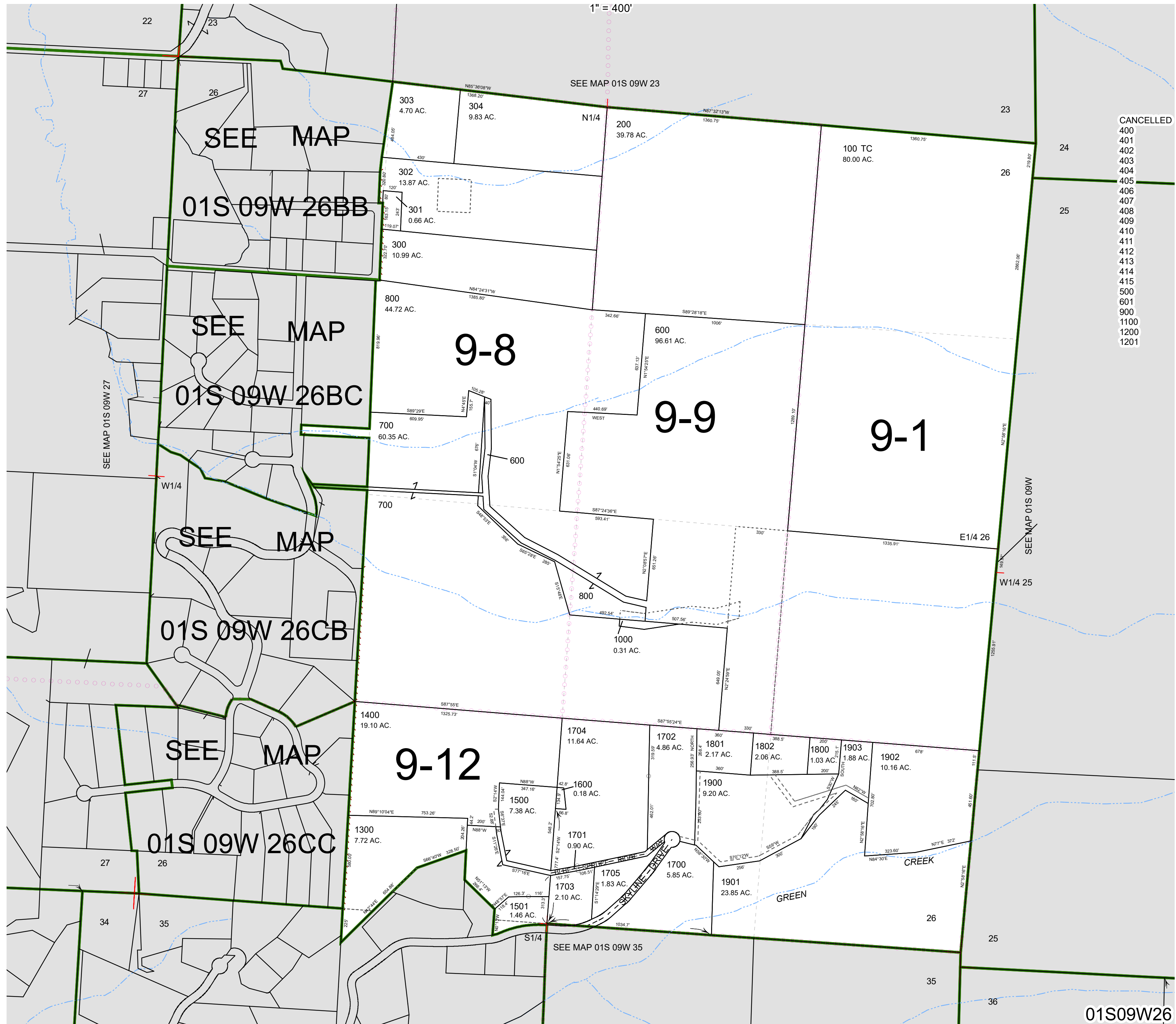
THIS MAP WAS PREPARED FOR ASSESSMENT PURPOSE ONLY



SECTION 26 T.1S. R.9W. W.M.
TILLAMOOK COUNTY

01S09W26

1" = 400'



- CANCELLED
- 400
- 401
- 402
- 403
- 404
- 405
- 406
- 407
- 408
- 409
- 410
- 411
- 412
- 413
- 414
- 415
- 500
- 601
- 900
- 1100
- 1200
- 1201

01S09W26

Revised 11/09/21, WS