

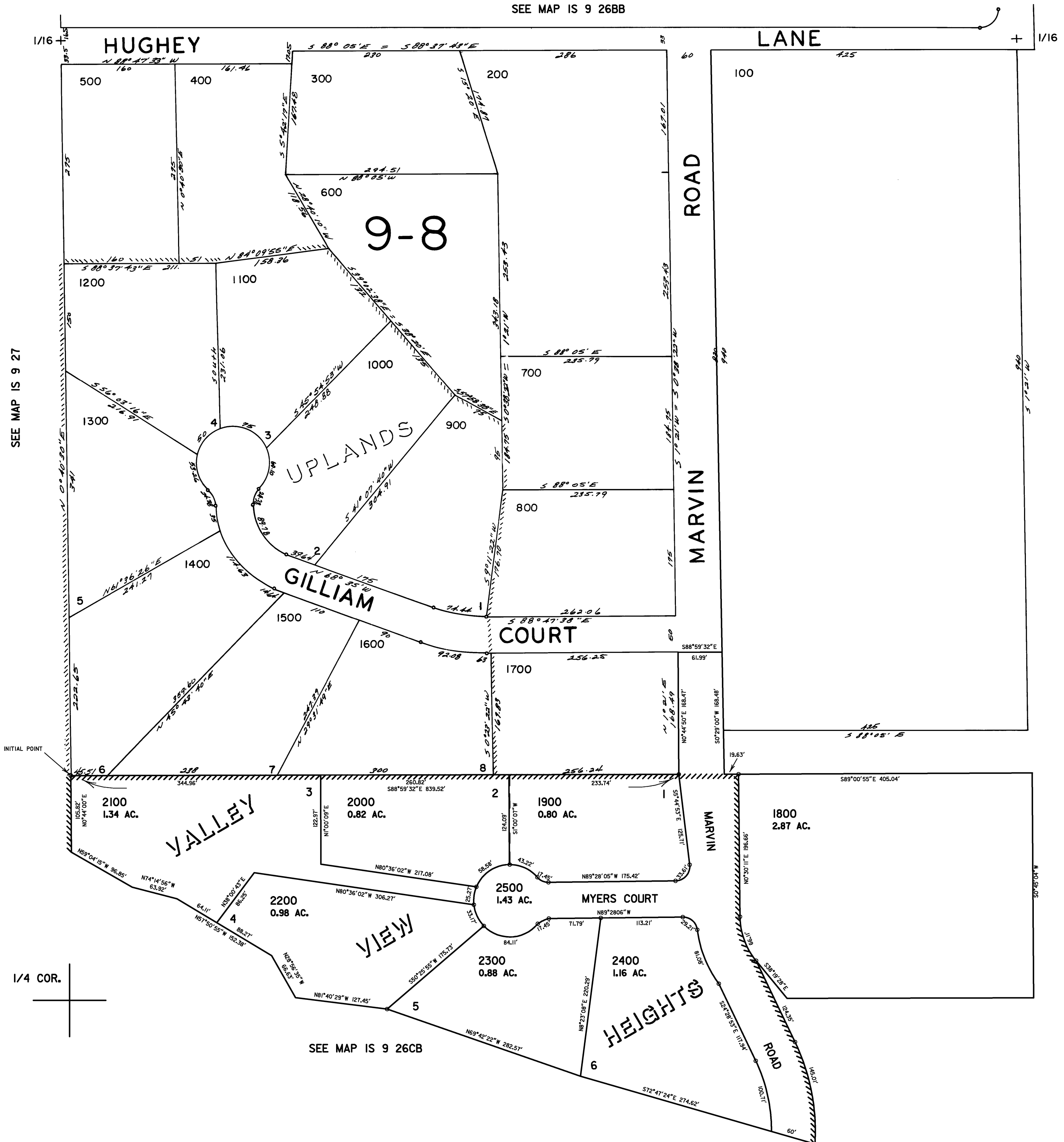
THIS MAP WAS PREPARED FOR  
ASSESSMENT PURPOSE ONLY

SW1/4 NW1/4 SEC.26 T.1S. R.9W.W.M.  
TILLAMOOK COUNTY

IS 9 26BC

1" = 100'

SEE MAP IS 9 26BB



SEE MAP IS 9 27

SEE MAP IS 9 26

SEE MAP IS 9 26CB

IS 9 26BC

REVISED 03/04/04, SA