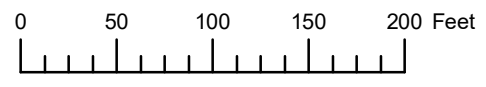


THIS MAP WAS PREPARED FOR ASSESSMENT PURPOSE ONLY

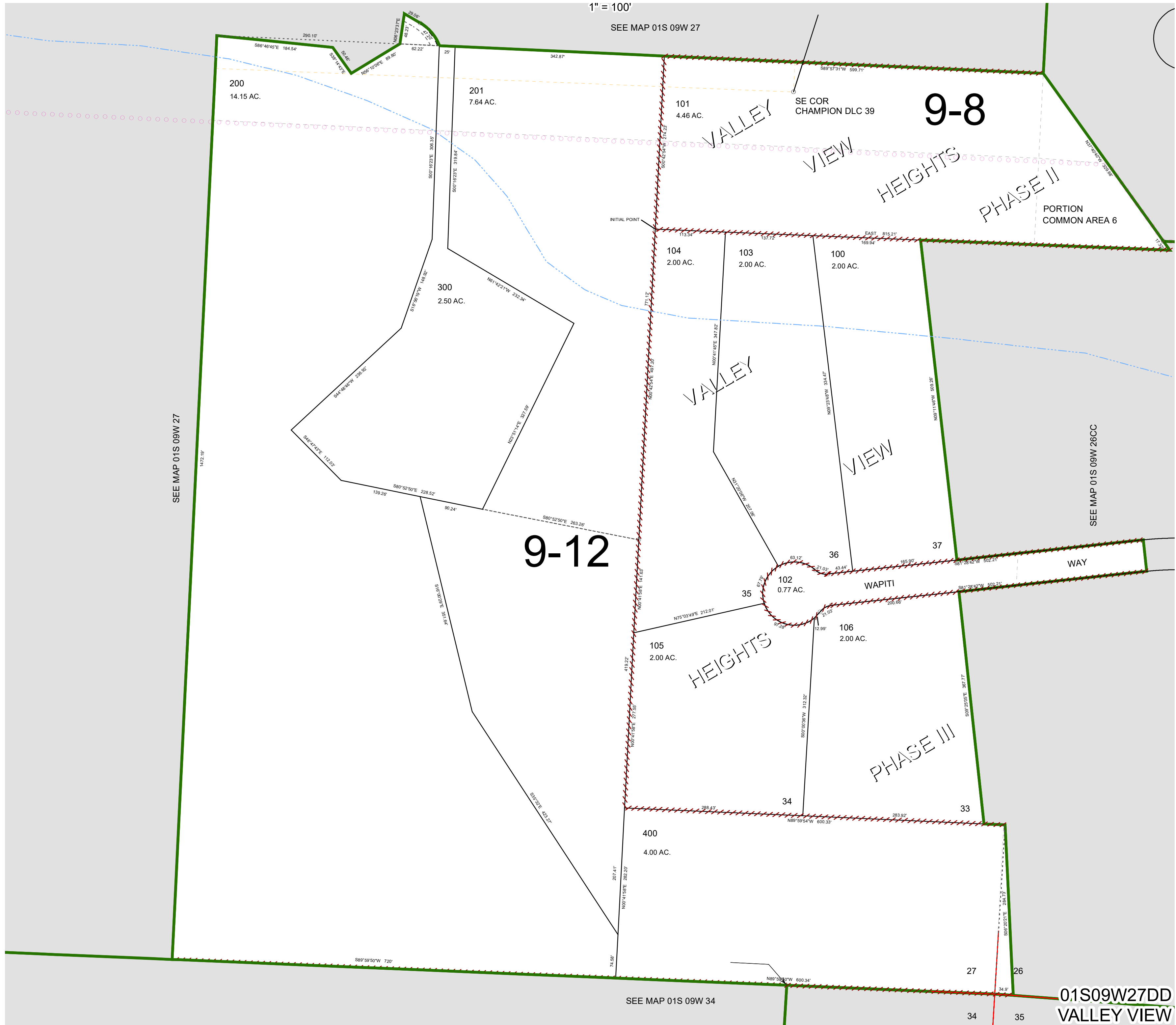


S.E. 1/4 S.E. 1/4 SEC. 27 T.1S. R.9W. W.M.

TILLAMOOK COUNTY

1" = 100'

01S09W27DD
VALLEY VIEW



SEE MAP 01S 09W 27

SEE MAP 01S 09W 27

SEE MAP 01S 09W 34

SEE MAP 01S 09W 26CC

01S09W27DD
VALLEY VIEW

Revised 08/07/20, WS