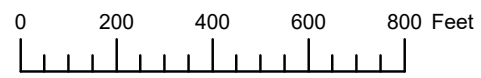


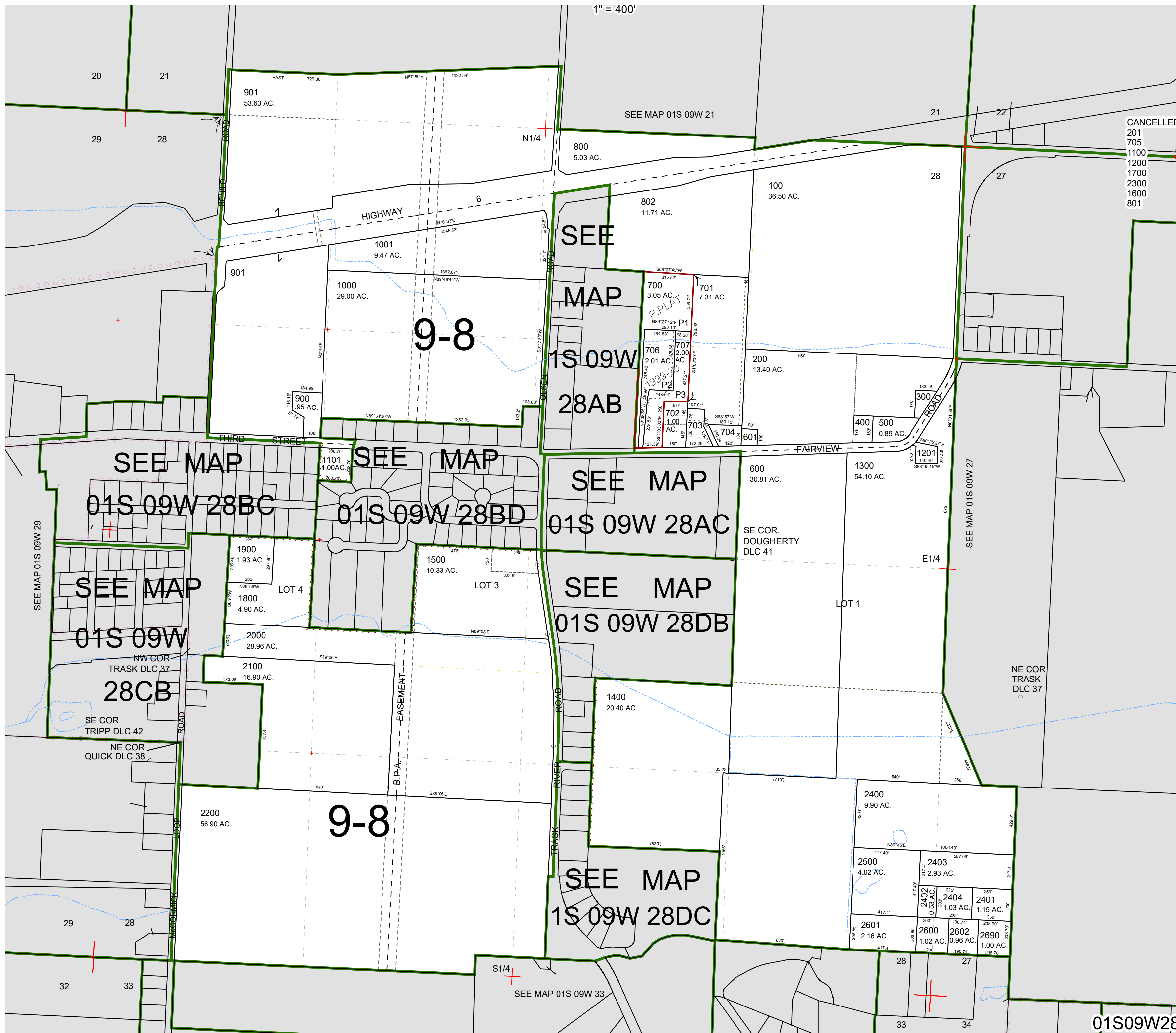
THIS MAP WAS PREPARED FOR ASSESSMENT PURPOSE ONLY



SECTION 28 T.1S. R.9W. W.M.
TILLAMOOK COUNTY

01S09W28

1" = 400'



CANCELLED
201
705
1100
1200
1700
2300
1600
801

01S09W28

Revised 12/01/22, WS