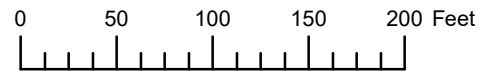
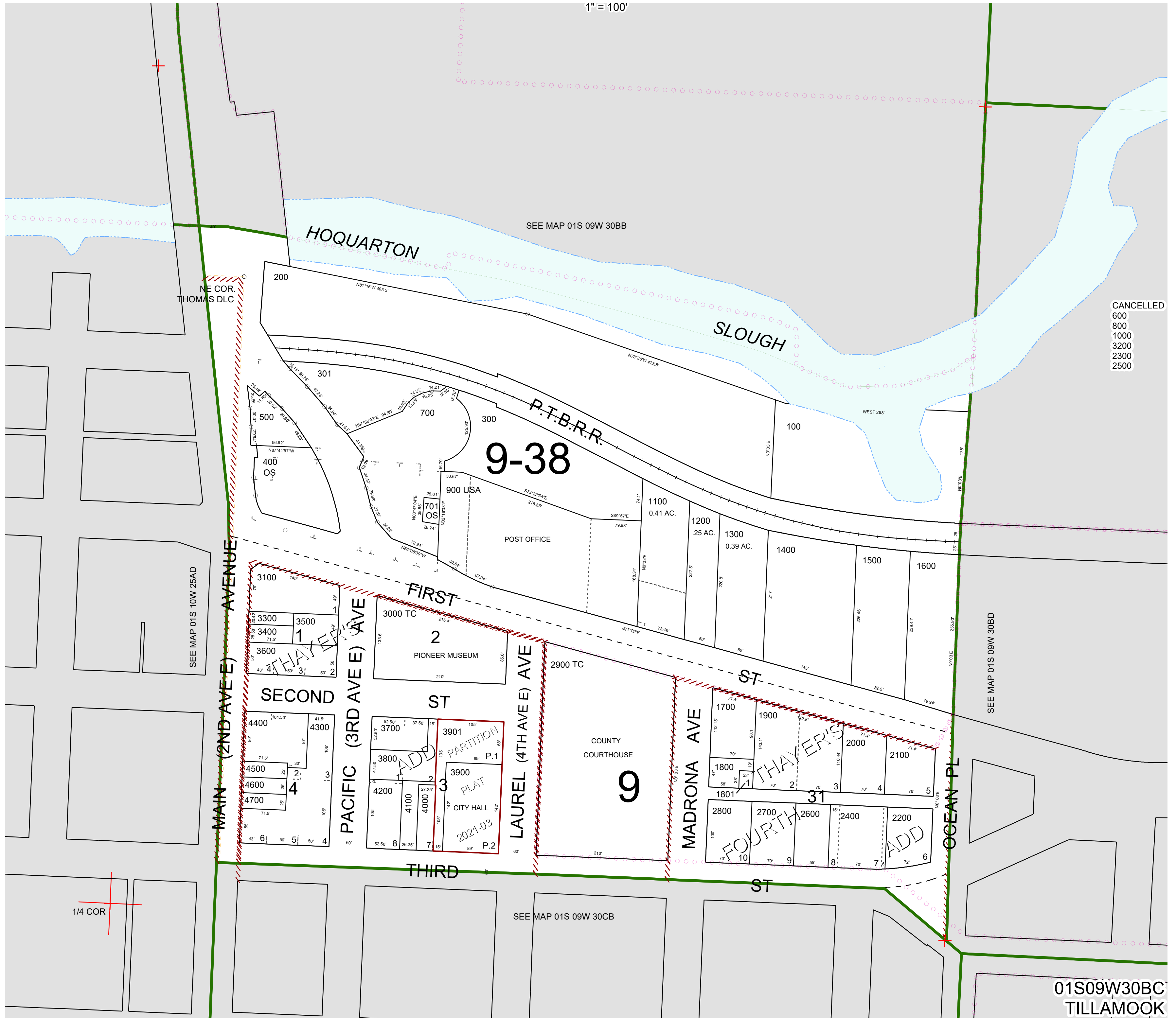


THIS MAP WAS PREPARED FOR ASSESSMENT PURPOSE ONLY



S.W.1/4 N.W.1/4 SEC.30 T.1S. R.9W. W.M.
TILLAMOOK COUNTY
1" = 100'

01S09W30BC
TILLAMOOK



- CANCELLED
- 600
- 800
- 1000
- 3200
- 2300
- 2500

01S09W30BC
TILLAMOOK