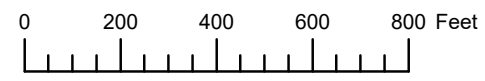
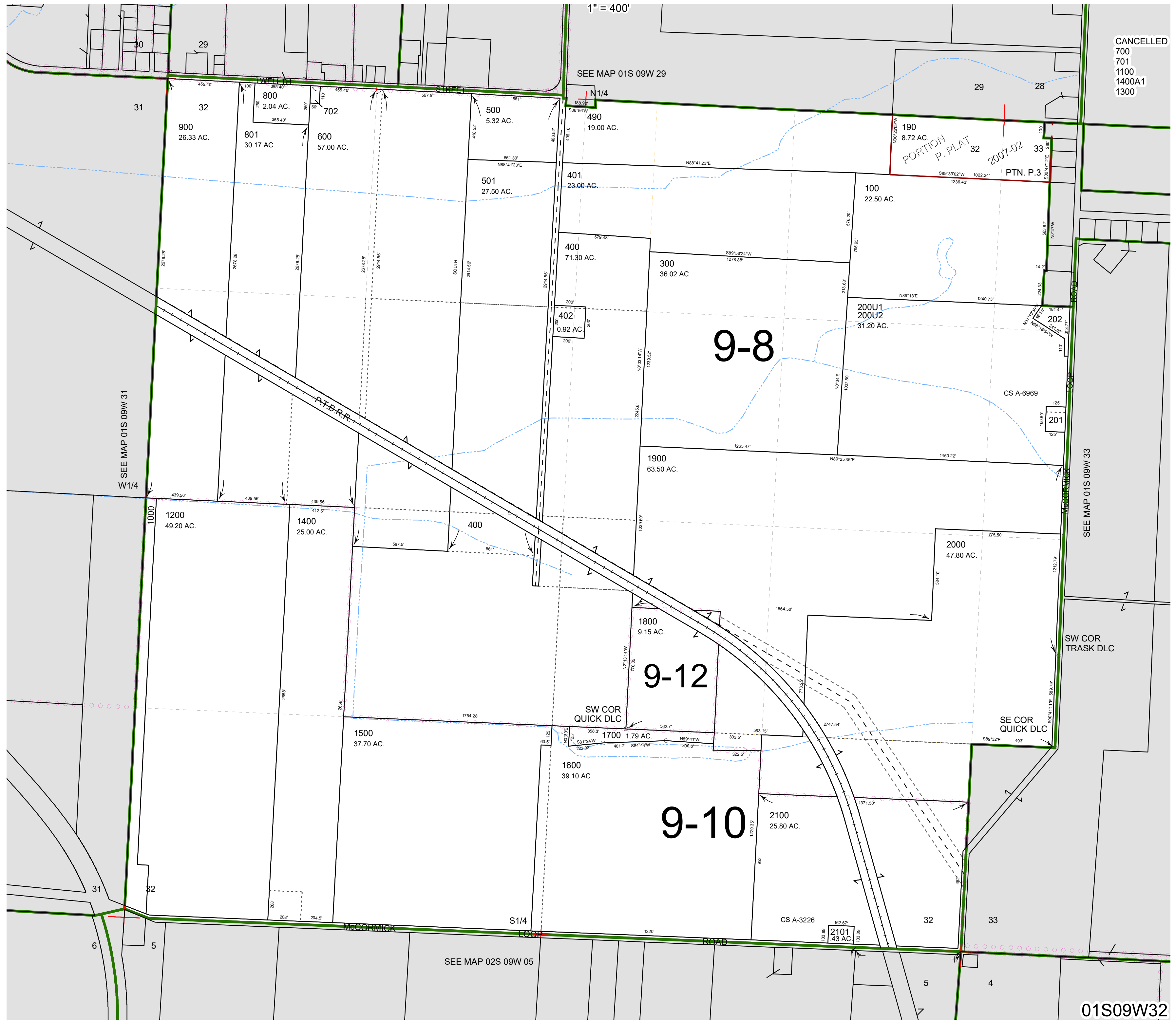


THIS MAP WAS PREPARED FOR ASSESSMENT PURPOSE ONLY



SECTION 32 T.1S. R.9W. W.M.  
TILLAMOOK COUNTY

01S09W32



CANCELLED  
700  
701  
1100  
1400A1  
1300

SEE MAP 01S 09W 33

SW COR TRASK DLC

SE COR QUICK DLC

SW COR QUICK DLC

SEE MAP 02S 09W 05

01S09W32

Revised 4/28/23, WS