

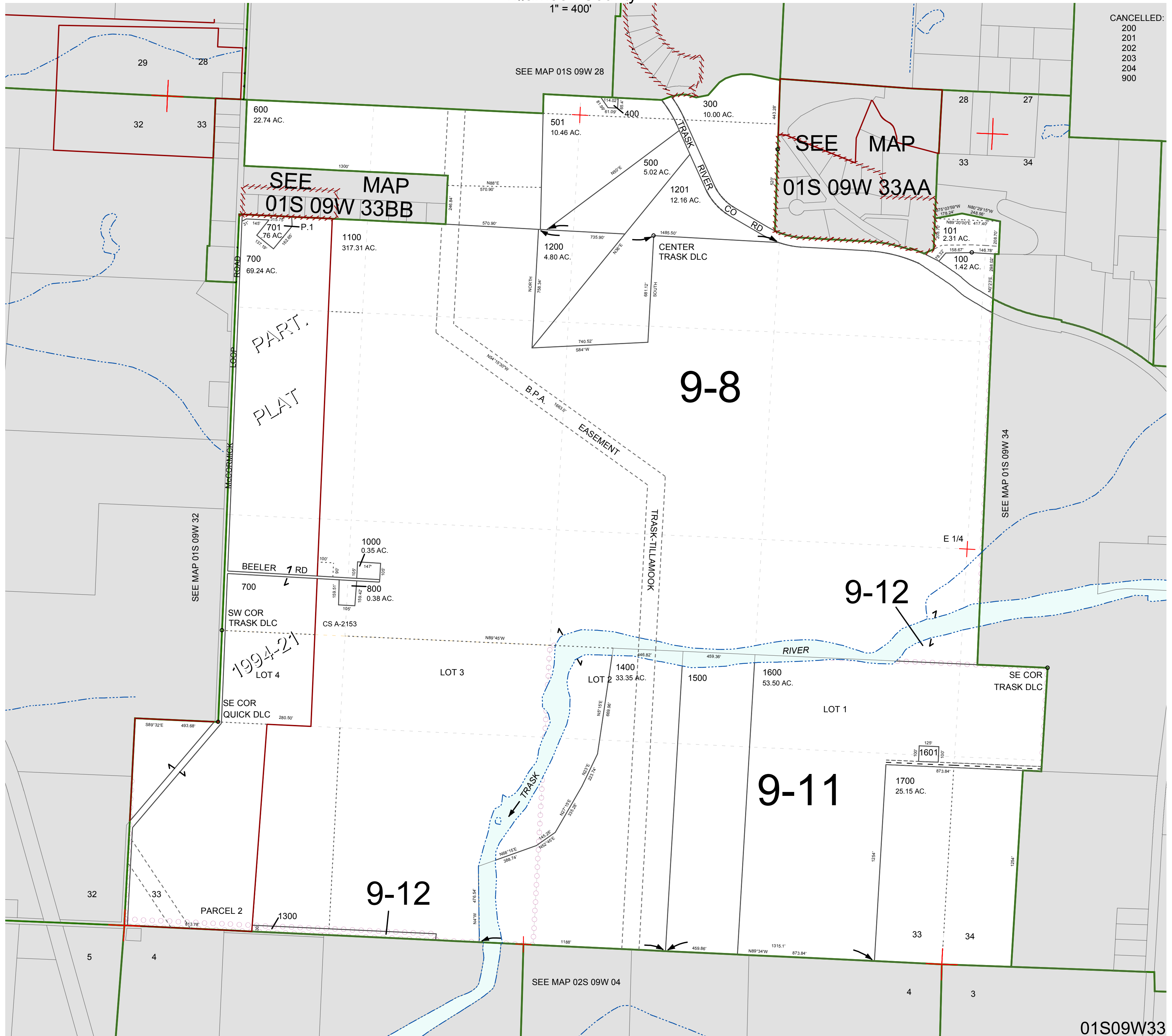
FOR ASSESSMENT AND TAXATION ONLY, NOT SUITABLE FOR LEGAL, ENGINEERING, OR SURVEY PURPOSES

SECTION 33 T.1S. R.9W. W.M.
Tillamook County

01S09W33

1" = 400'

CANCELLED:
200
201
202
203
204
900



01S09W33
REVISED 2/18/16, WS