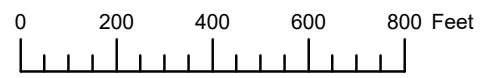


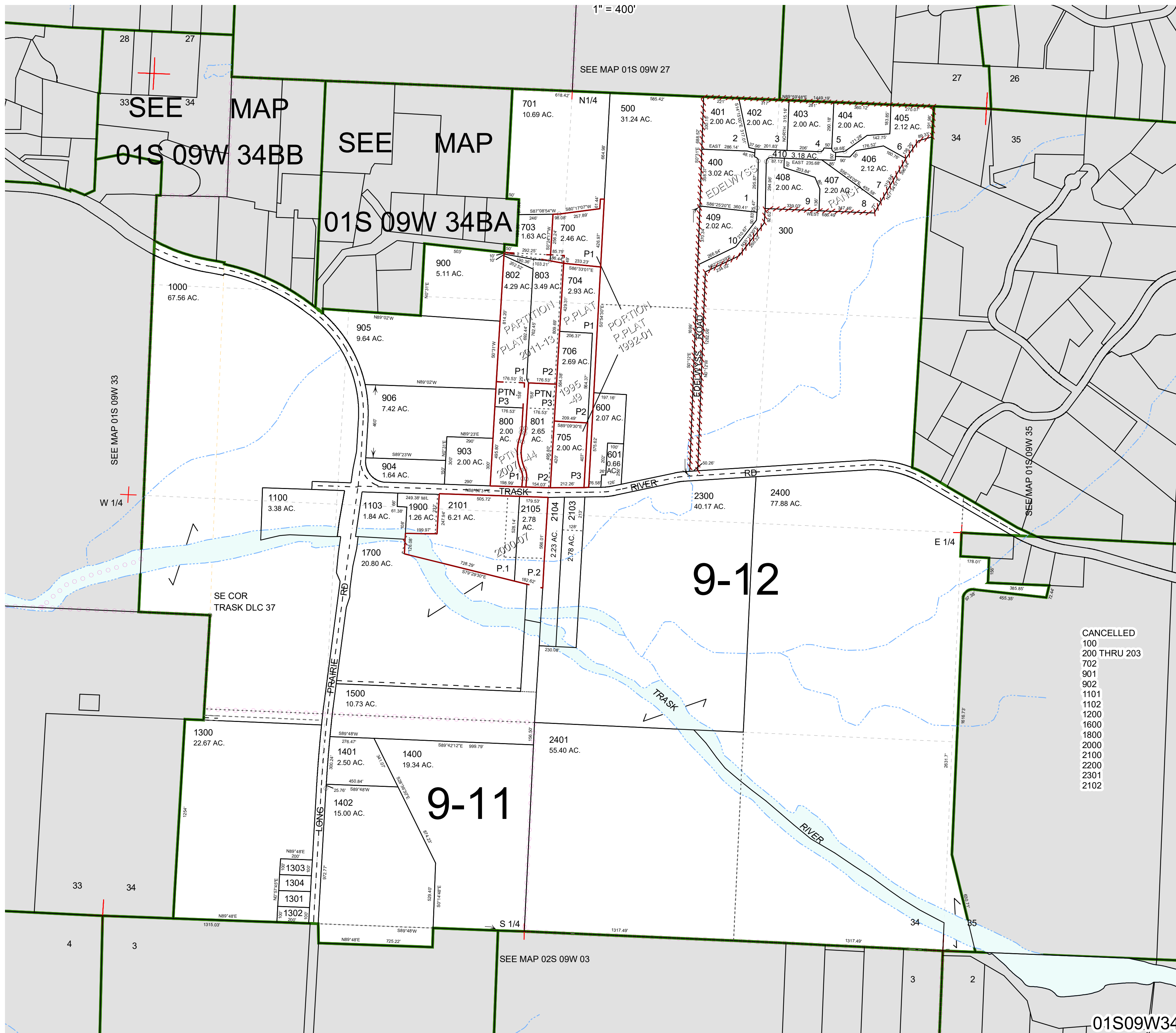
THIS MAP WAS PREPARED FOR ASSESSMENT PURPOSE ONLY



SECTION 34 T.1S. R.9W. W.M.
TILLAMOOK COUNTY

01S09W34

1" = 400'



- CANCELLED
- 100
- 200 THRU 203
- 702
- 901
- 902
- 1101
- 1102
- 1200
- 1600
- 1800
- 2000
- 2100
- 2200
- 2301
- 2102