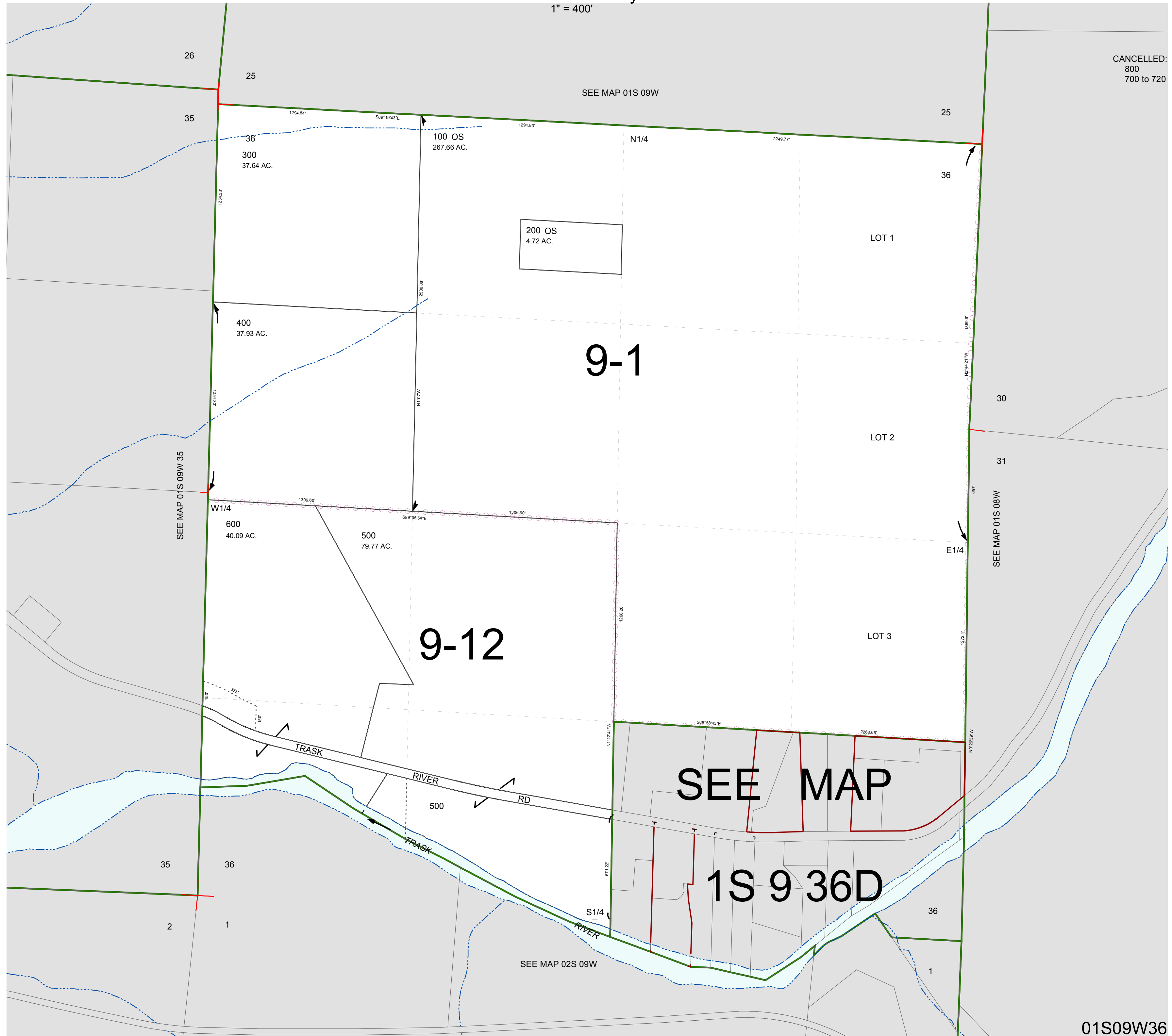


FOR ASSESSMENT AND TAXATION ONLY, NOT SUITABLE FOR LEGAL, ENGINEERING, OR SURVEY PURPOSES

SECTION 36 T.1S. R.9W. W.M.  
Tillamook County  
1" = 400'

01S09W36

CANCELLED:  
800  
700 to 720



01S09W36  
REVISED 2/18/16, WS