

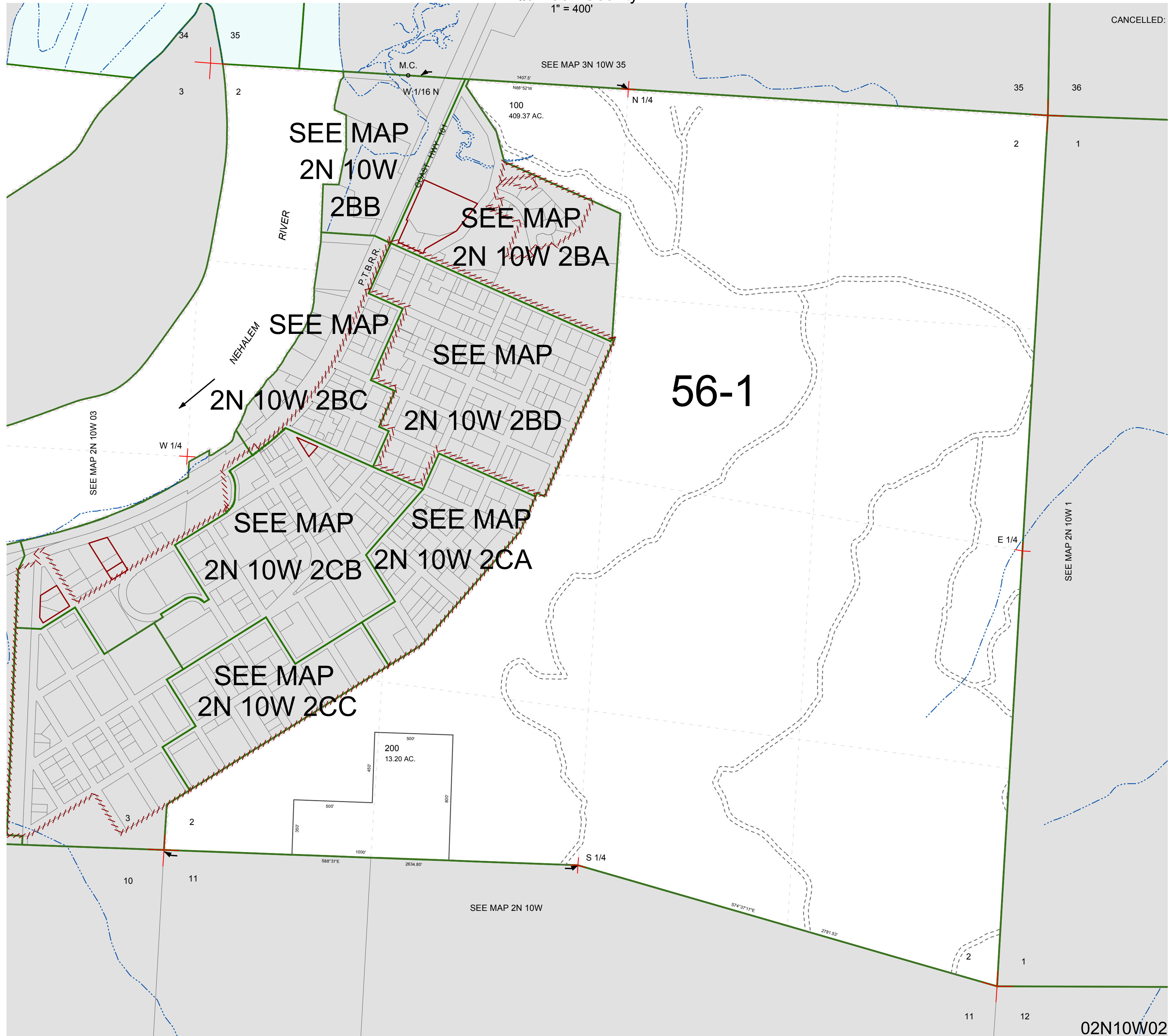
FOR ASSESSMENT AND TAXATION ONLY, NOT SUITABLE FOR  
LEGAL, ENGINEERING, OR SURVEY PURPOSES

SECTION 2 T.2N. R.10W. W.M.  
Tillamook County

1" = 400'

02N10W02

CANCELLED:



02N10W02  
REVISED 9/17/15, WS