

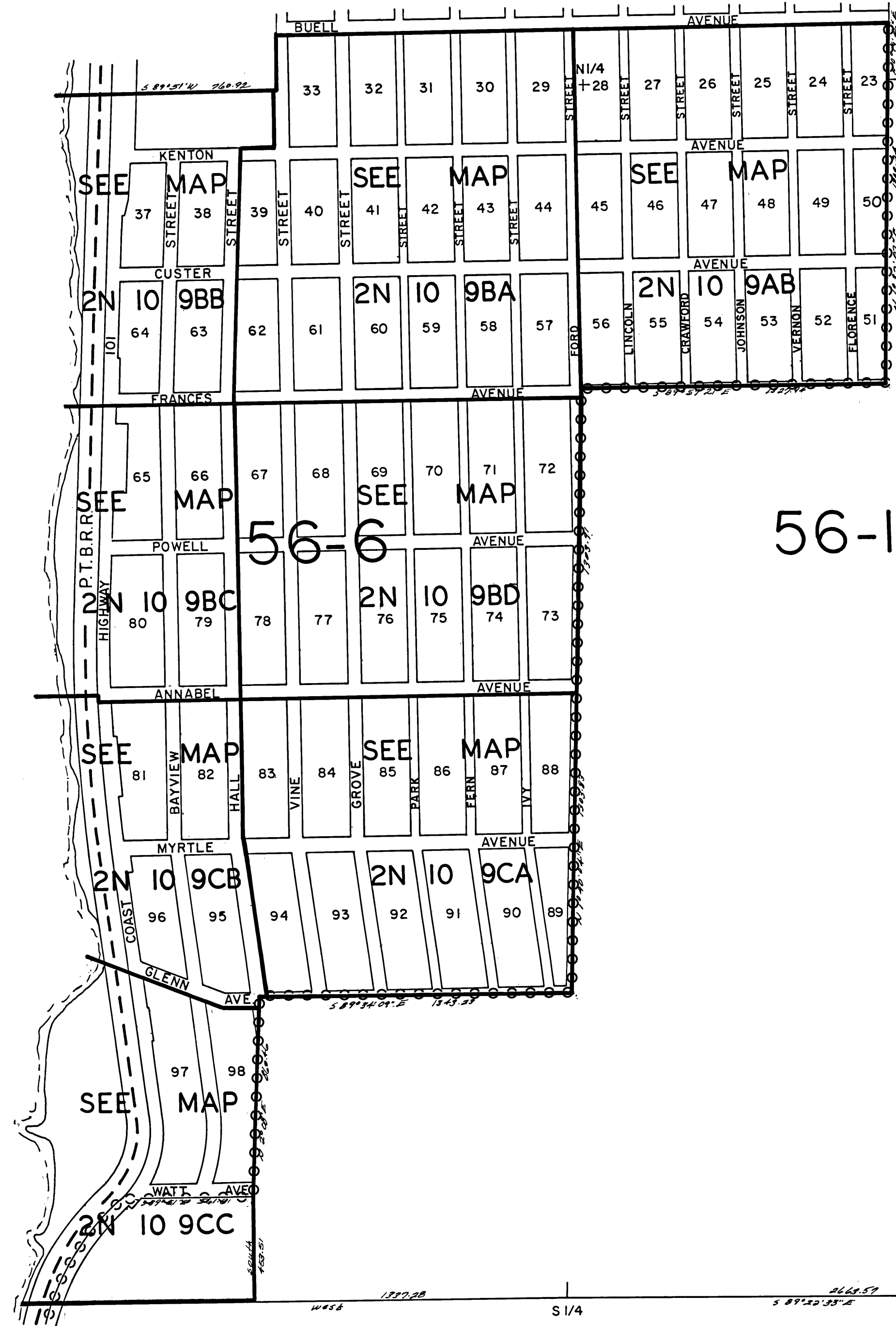
THIS MAP WAS PREPARED FOR
ASSESSMENT PURPOSE ONLY

SECTION 9 T.2N. R.10W. W.M.
TILLAMOOK COUNTY
1" = 400'

2N 10 9
& INDEX

SEE MAP 2N 10 4

BAY
NEHALEM



100
320.00 Ac.

4
3
9
10
E 1/4
9
10
16
15

SEE MAP 2N 10

SEE MAP 2N 10

2N 10 9
REVISED 3-3-99, BPH