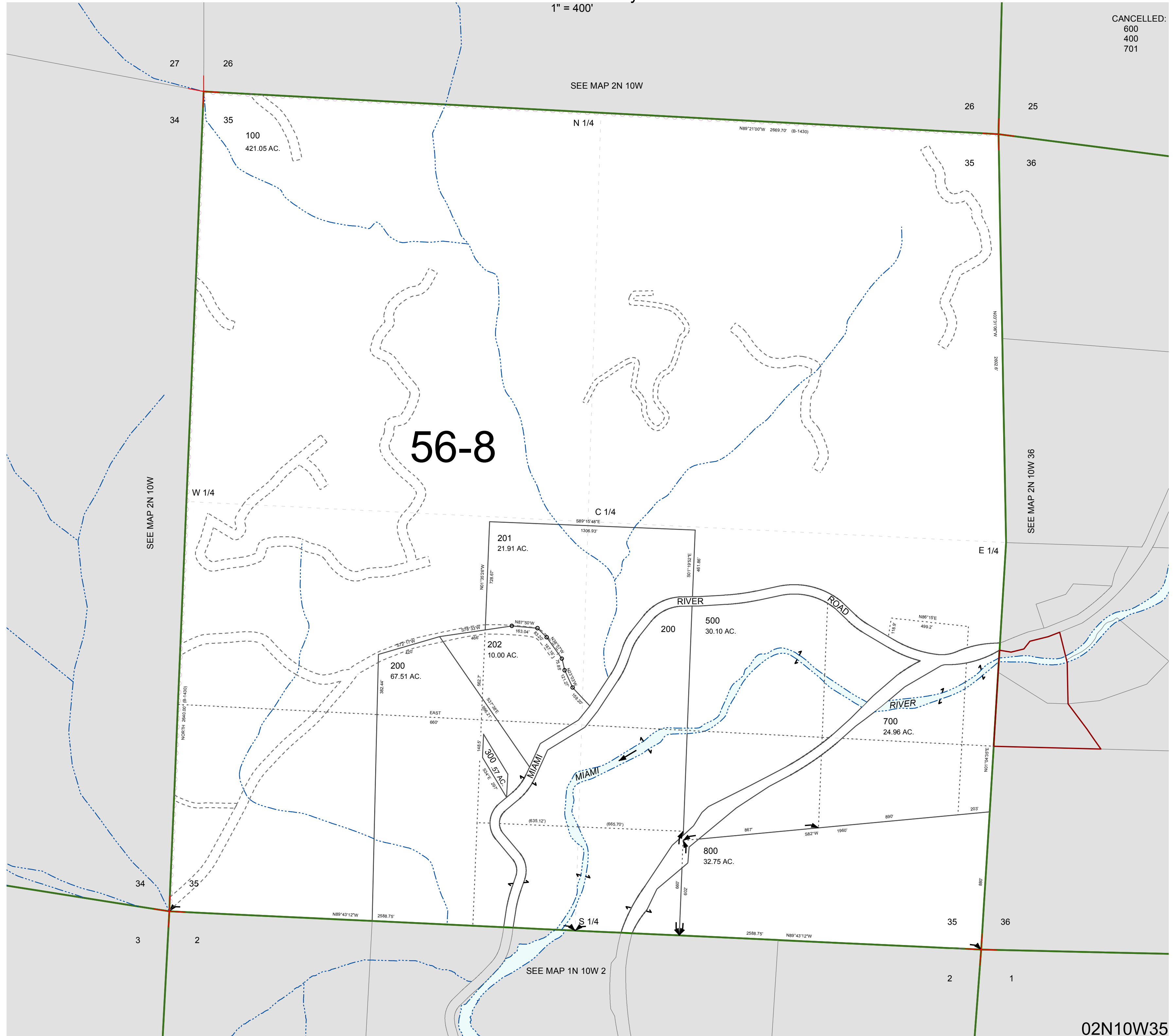


FOR ASSESSMENT AND TAXATION ONLY, NOT SUITABLE FOR LEGAL, ENGINEERING, OR SURVEY PURPOSES

SECTION 35 T.2N. R.10W. W.M.
Tillamook County
1" = 400'

02N10W35

CANCELLED:
600
400
701



02N10W35
REVISED 6/05/15, WS