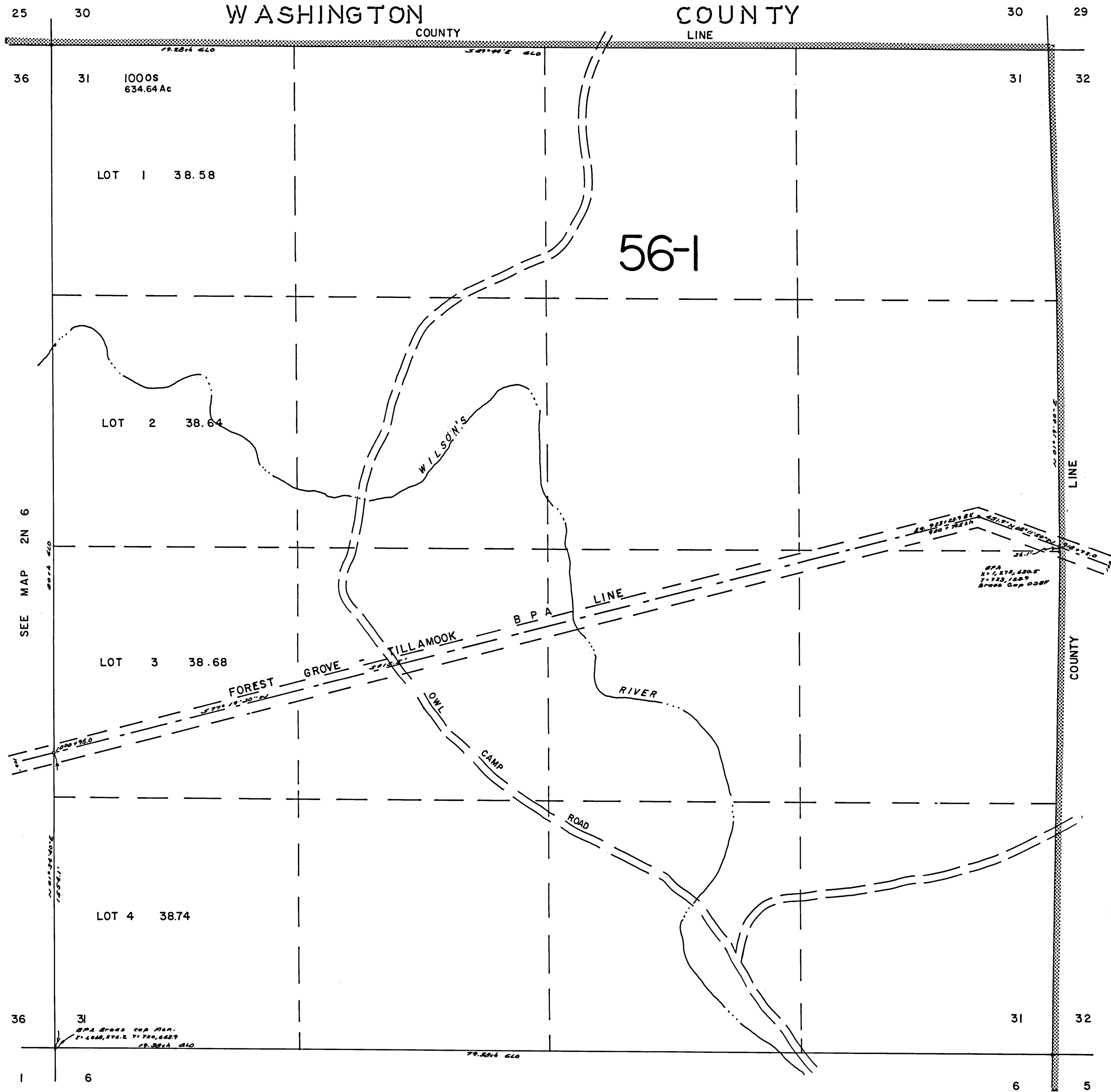


THIS MAP WAS PREPARED FOR
ASSESSMENT PURPOSE ONLY

SECTION 31 T.2N. R.5W. W.M.
TILLAMOOK COUNTY

2N 5 1

1" = 400'



WASHINGTON COUNTY

COUNTY

2N 5 31

REVISED 3-2-99, BPH