

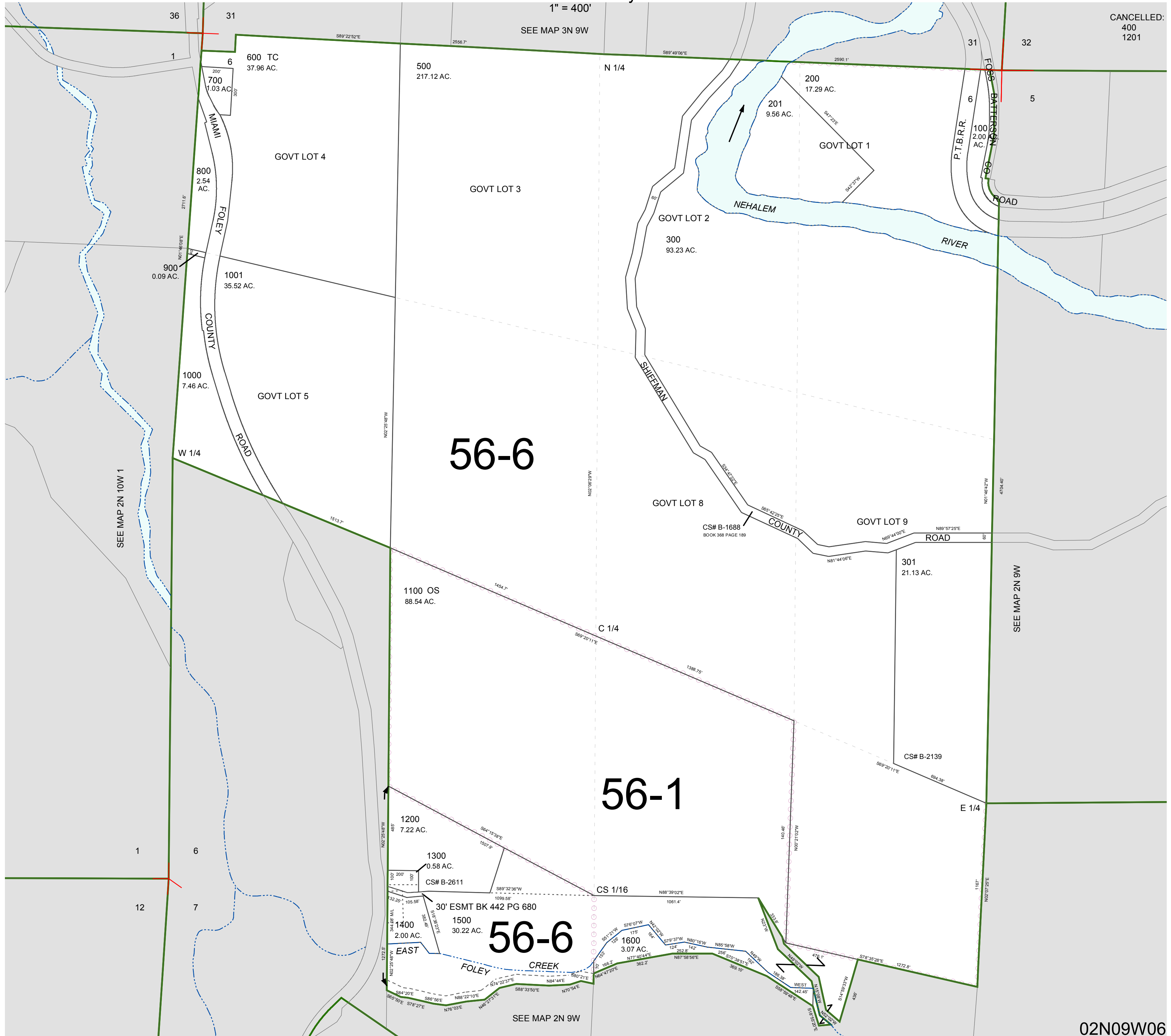
FOR ASSESSMENT AND TAXATION ONLY. NOT SUITABLE FOR LEGAL, ENGINEERING, OR SURVEY PURPOSES

SECTION 6 T.2N. R.9W. W.M.
Tillamook County

02N09W06

1" = 400'

CANCELLED:
400
1201



02N09W06
REVISED 5/1/15, WS