

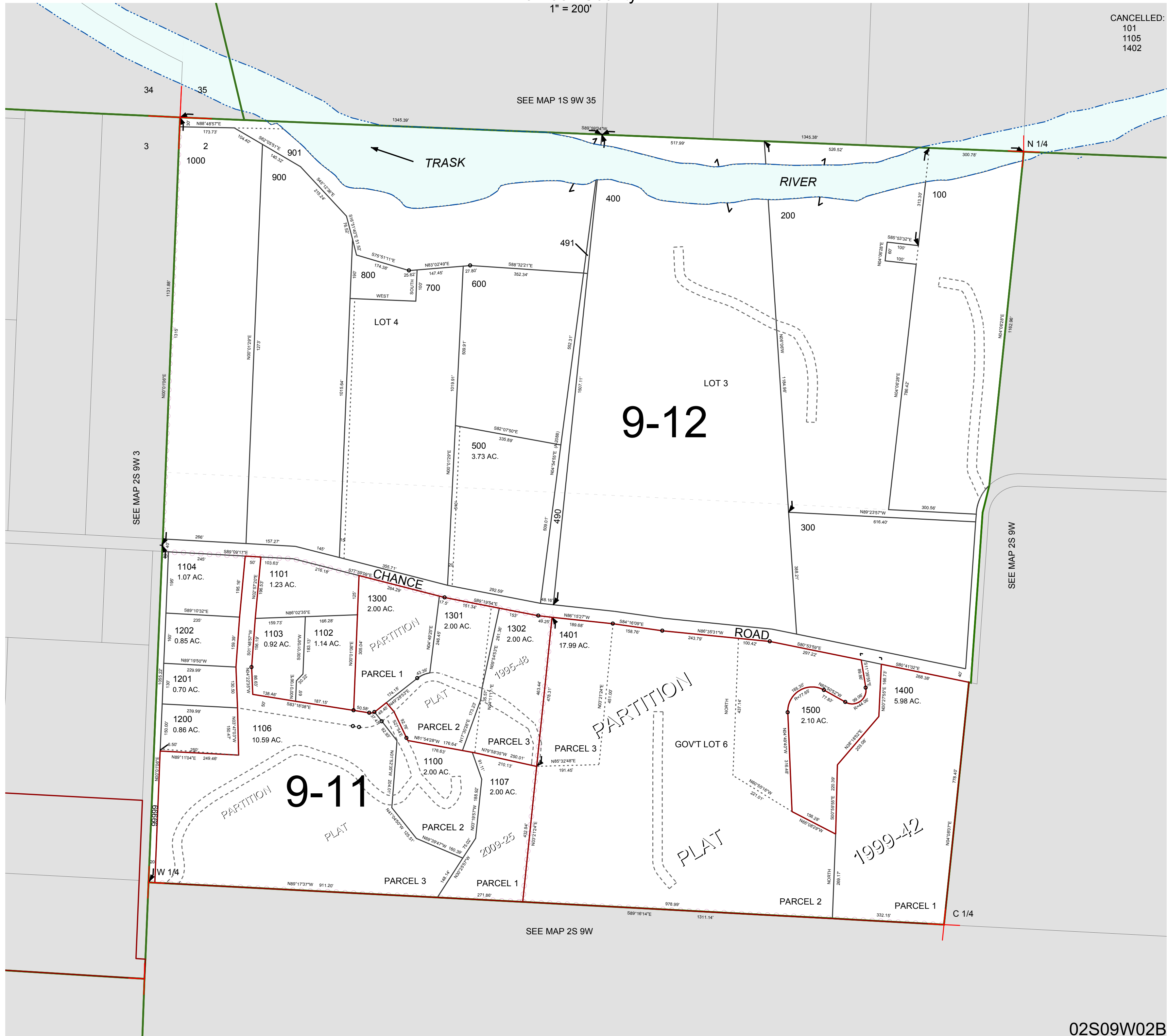
FOR ASSESSMENT AND TAXATION ONLY, NOT SUITABLE FOR LEGAL, ENGINEERING, OR SURVEY PURPOSES

N.W. 1/4 SEC. 2 T. 2S. R. 9W. W.M.
Tillamook County

1" = 200'

02S09W02B

CANCELLED:
101
1105
1402



SEE MAP 2S 9W 3

SEE MAP 1S 9W 35

SEE MAP 2S 9W

SEE MAP 2S 9W

02S09W02B
REVISED 12/29/17, WS