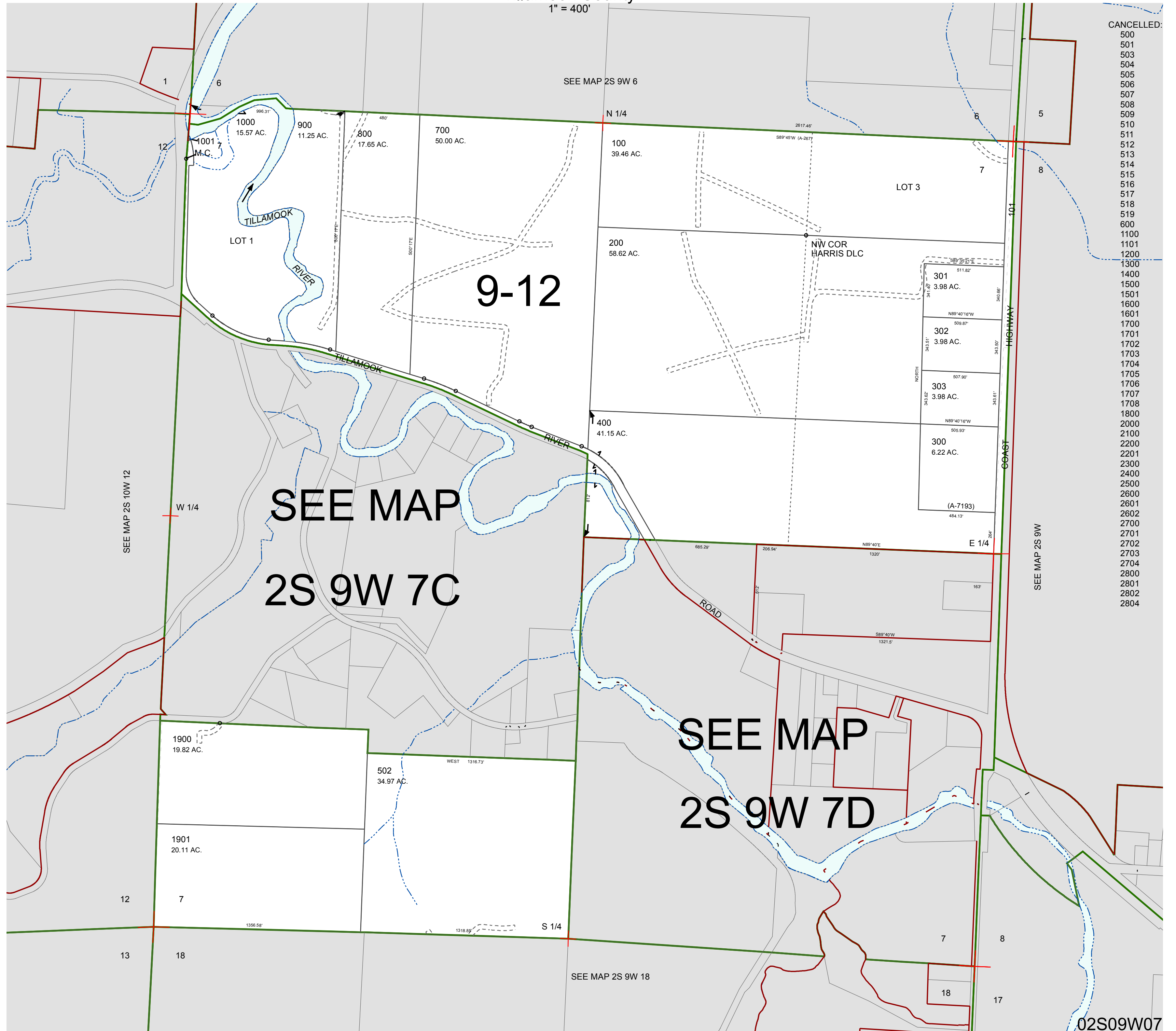


FOR ASSESSMENT AND TAXATION ONLY, NOT SUITABLE FOR LEGAL, ENGINEERING, OR SURVEY PURPOSES

SECTION 7 T.2S. R.9W. W.M.
Tillamook County

1" = 400'

02S09W07



- CANCELLED:
- 500
 - 501
 - 503
 - 504
 - 505
 - 506
 - 507
 - 508
 - 509
 - 510
 - 511
 - 512
 - 513
 - 514
 - 515
 - 516
 - 517
 - 518
 - 519
 - 600
 - 1100
 - 1200
 - 1300
 - 1400
 - 1500
 - 1501
 - 1600
 - 1601
 - 1700
 - 1701
 - 1702
 - 1703
 - 1704
 - 1705
 - 1706
 - 1707
 - 1708
 - 1800
 - 2000
 - 2100
 - 2200
 - 2201
 - 2300
 - 2400
 - 2500
 - 2600
 - 2601
 - 2602
 - 2700
 - 2701
 - 2702
 - 2703
 - 2704
 - 2800
 - 2801
 - 2802
 - 2804

02S09W07

REVISED 2/18/16, WS