

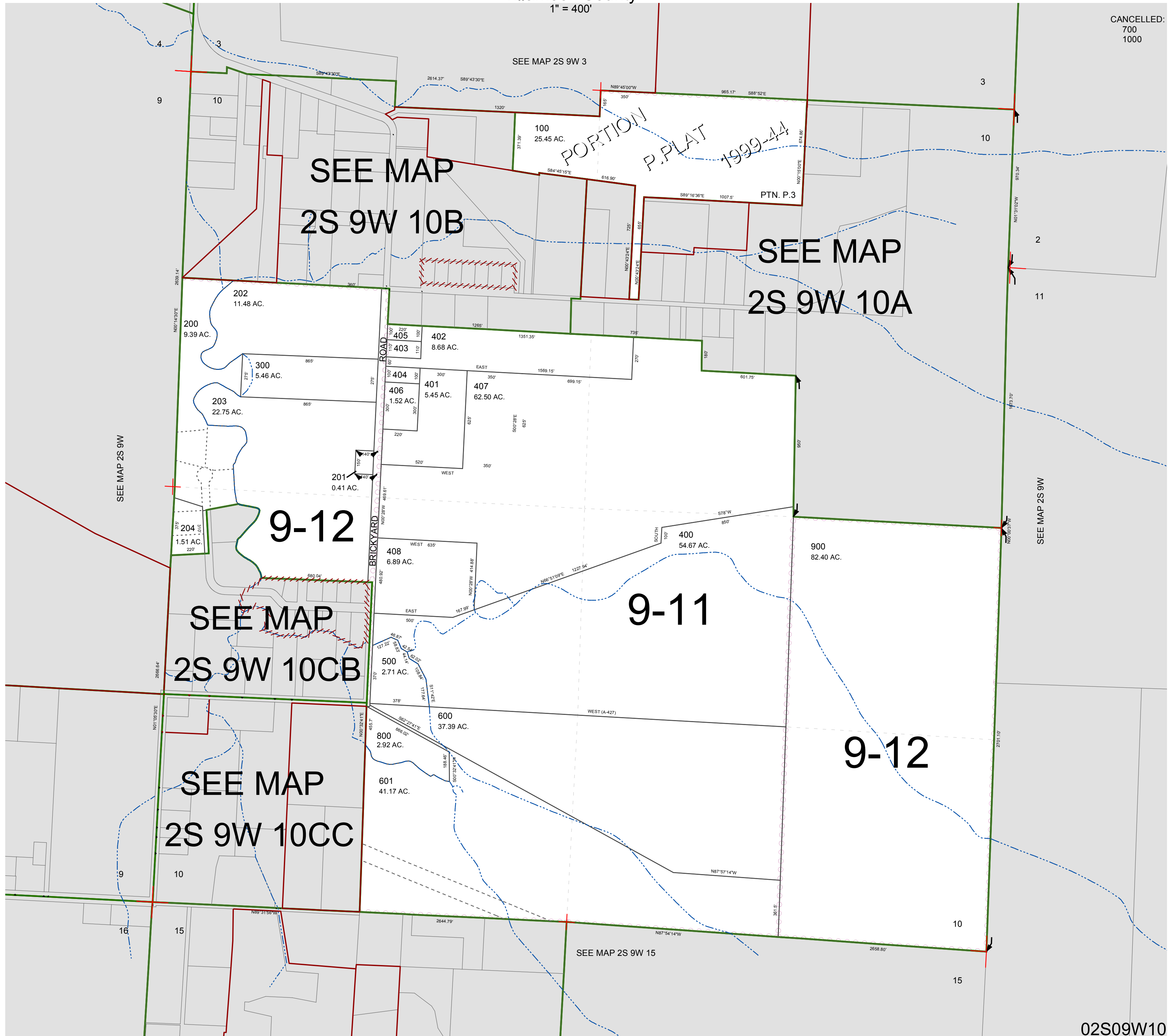
FOR ASSESSMENT AND TAXATION ONLY, NOT SUITABLE FOR LEGAL, ENGINEERING, OR SURVEY PURPOSES

SECTION 10 T.2S. R.9W. W.M.
Tillamook County

1" = 400'

02S09W10

CANCELLED:
700
1000



SEE MAP
2S 9W 10B

SEE MAP
2S 9W 10A

9-12
SEE MAP
2S 9W 10CB

9-11

SEE MAP
2S 9W 10CC

9-12

SEE MAP 2S 9W 15

02S09W10
REVISED 2/18/16, WS