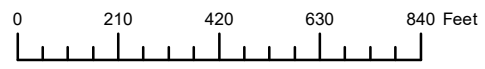


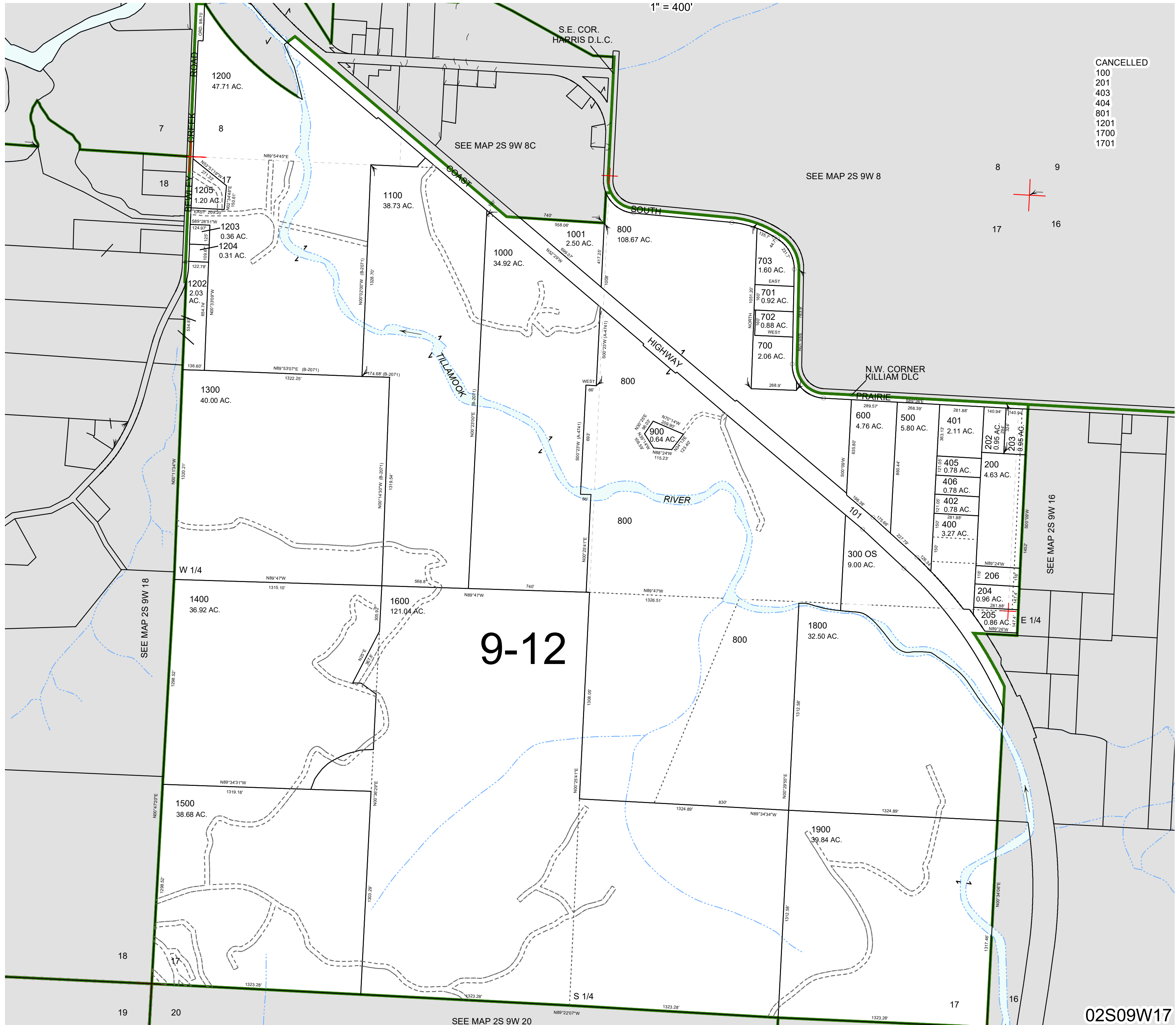
THIS MAP WAS PREPARED FOR  
ASSESSMENT PURPOSE ONLY



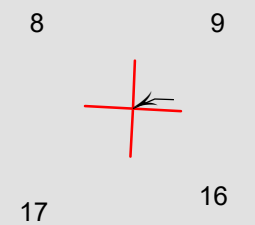
SECTION 17 T.2S. R.9W. W.M.  
TILLAMOOK COUNTY

02S09W17

1" = 400'



- CANCELLED
- 100
- 201
- 403
- 404
- 801
- 1201
- 1700
- 1701



9-12

02S09W17

Revised 8/20/24, WS