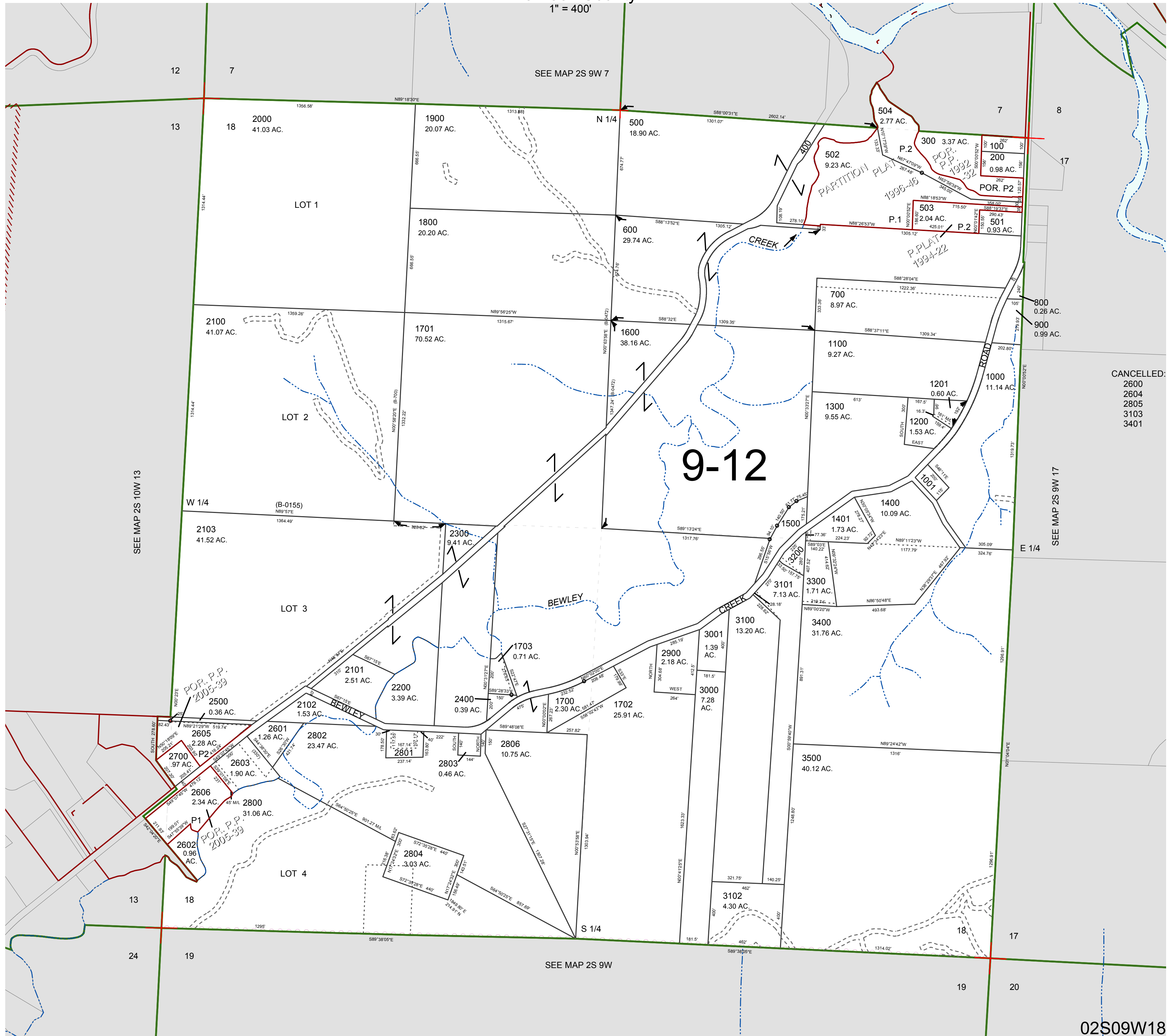


FOR ASSESSMENT AND TAXATION ONLY, NOT SUITABLE FOR LEGAL, ENGINEERING, OR SURVEY PURPOSES

SECTION 18 T.2S. R.9W. W.M.
Tillamook County

02S09W18

1" = 400'



CANCELLED:
2600
2604
2805
3103
3401

02S09W18

REVISED 08/17/18, WS