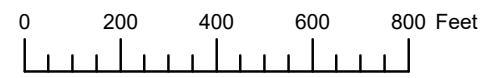


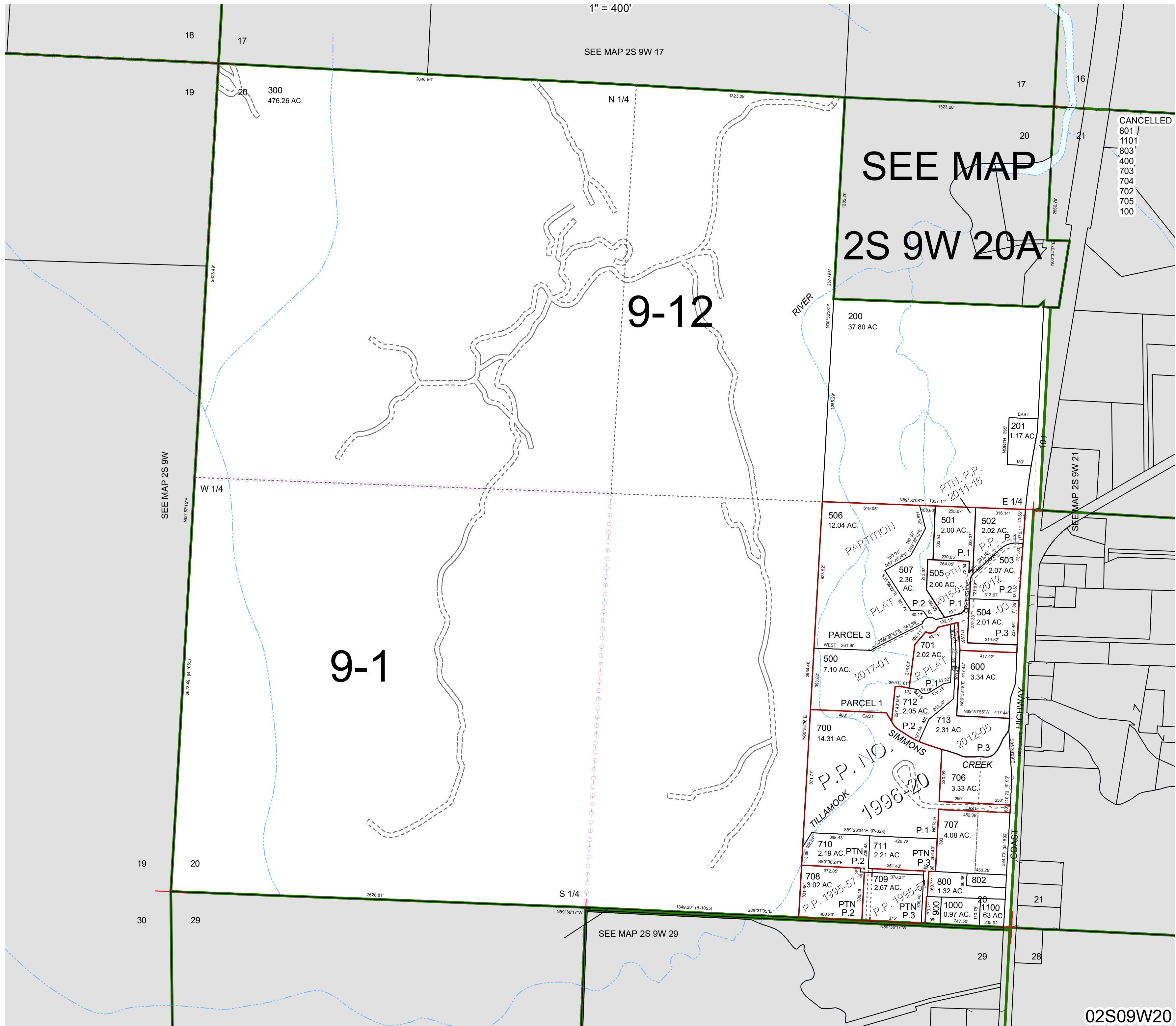
THIS MAP WAS PREPARED FOR ASSESSMENT PURPOSE ONLY



SECTION 20 T.2S. R.9W. W.M.
TILLAMOOK COUNTY

02S09W20

1" = 400'



CANCELLED
801
1101
803
400
703
704
702
705
100

02S09W20

Revised 12/01/22, WS