

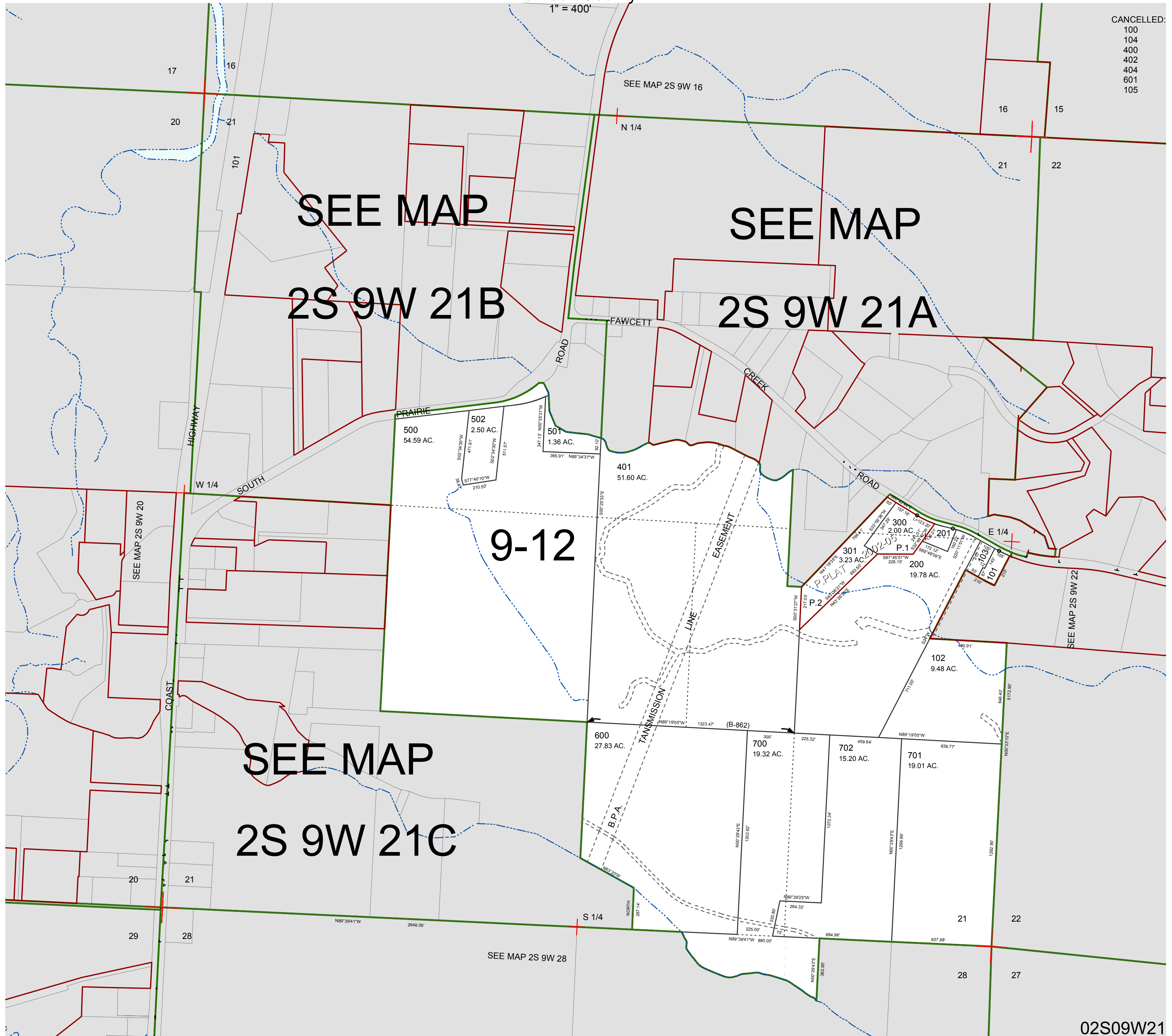
FOR ASSESSMENT AND TAXATION ONLY, NOT SUITABLE FOR LEGAL, ENGINEERING, OR SURVEY PURPOSES

SECTION 21 T.2S. R.9W. W.M.
Tillamook County

02S09W21

CANCELLED:
100
104
400
402
404
601
105

1" = 400'



02S09W21
REVISED 6/2/17, WS