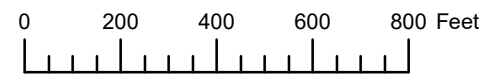


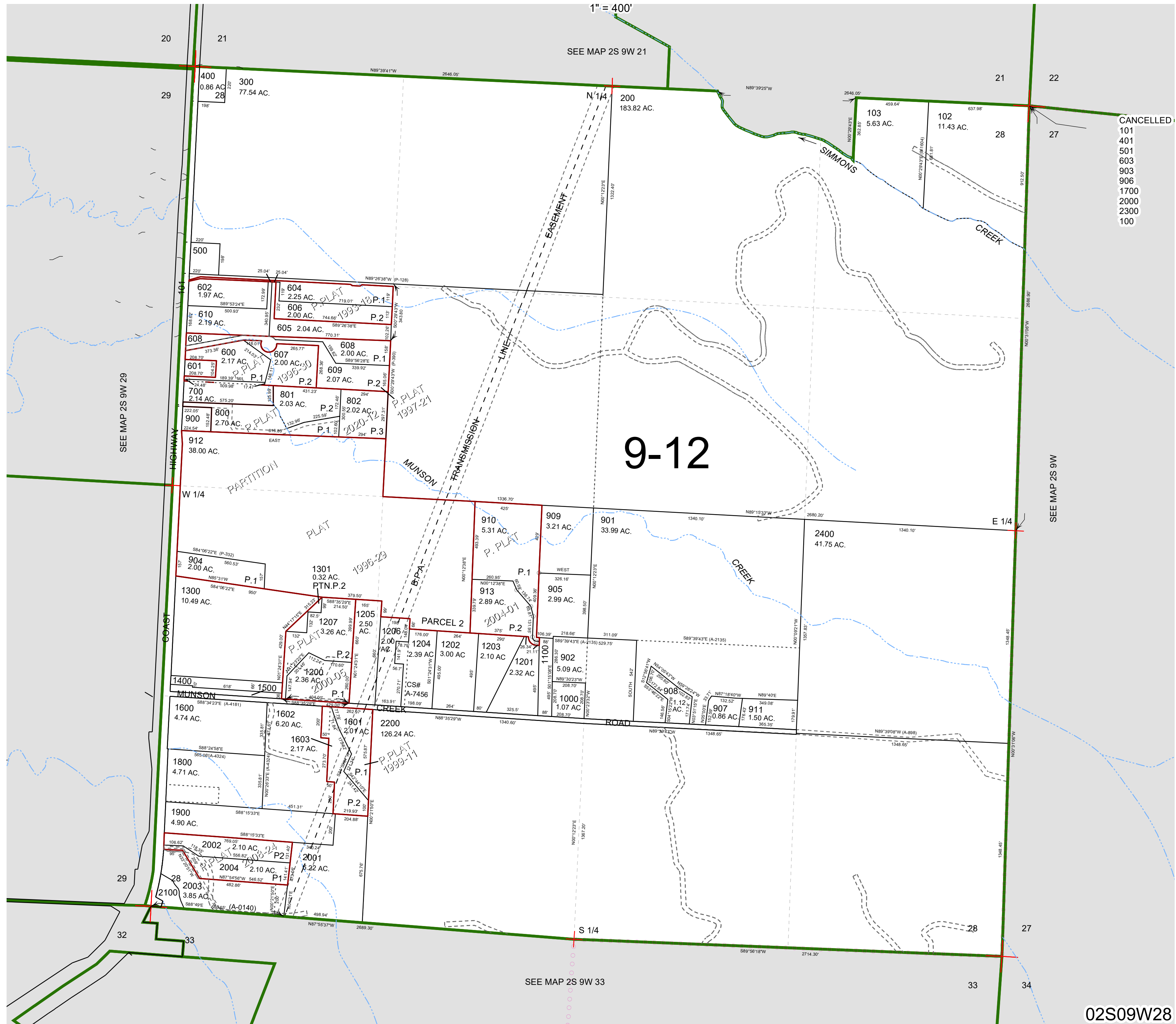
THIS MAP WAS PREPARED FOR ASSESSMENT PURPOSE ONLY



SECTION 28 T.2S. R.9W. W.M.
TILLAMOOK COUNTY

02S09W28

1" = 400'



- CANCELLED
- 101
- 401
- 501
- 603
- 903
- 906
- 1700
- 2000
- 2300
- 100

9-12

SEE MAP 2S 9W 33

02S09W28

Revised 12/09/20, WS