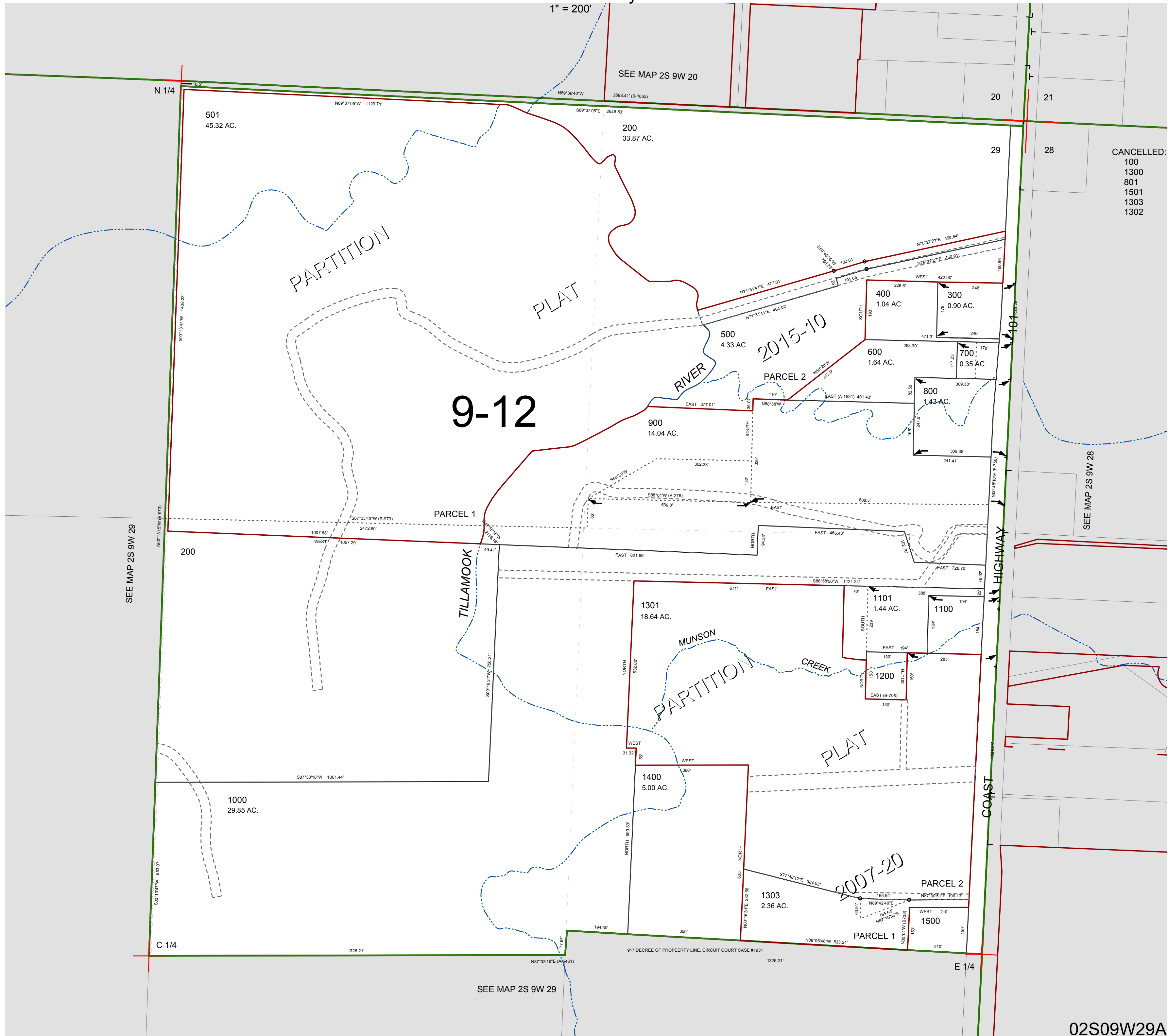


FOR ASSESSMENT AND TAXATION ONLY, NOT SUITABLE FOR LEGAL, ENGINEERING, OR SURVEY PURPOSES

N.E.1/4 SEC.29 T.2S. R.9W. W.M.
Tillamook County

02S09W29A

1" = 200'



02S09W29A
REVISED 8/29/17, WS