

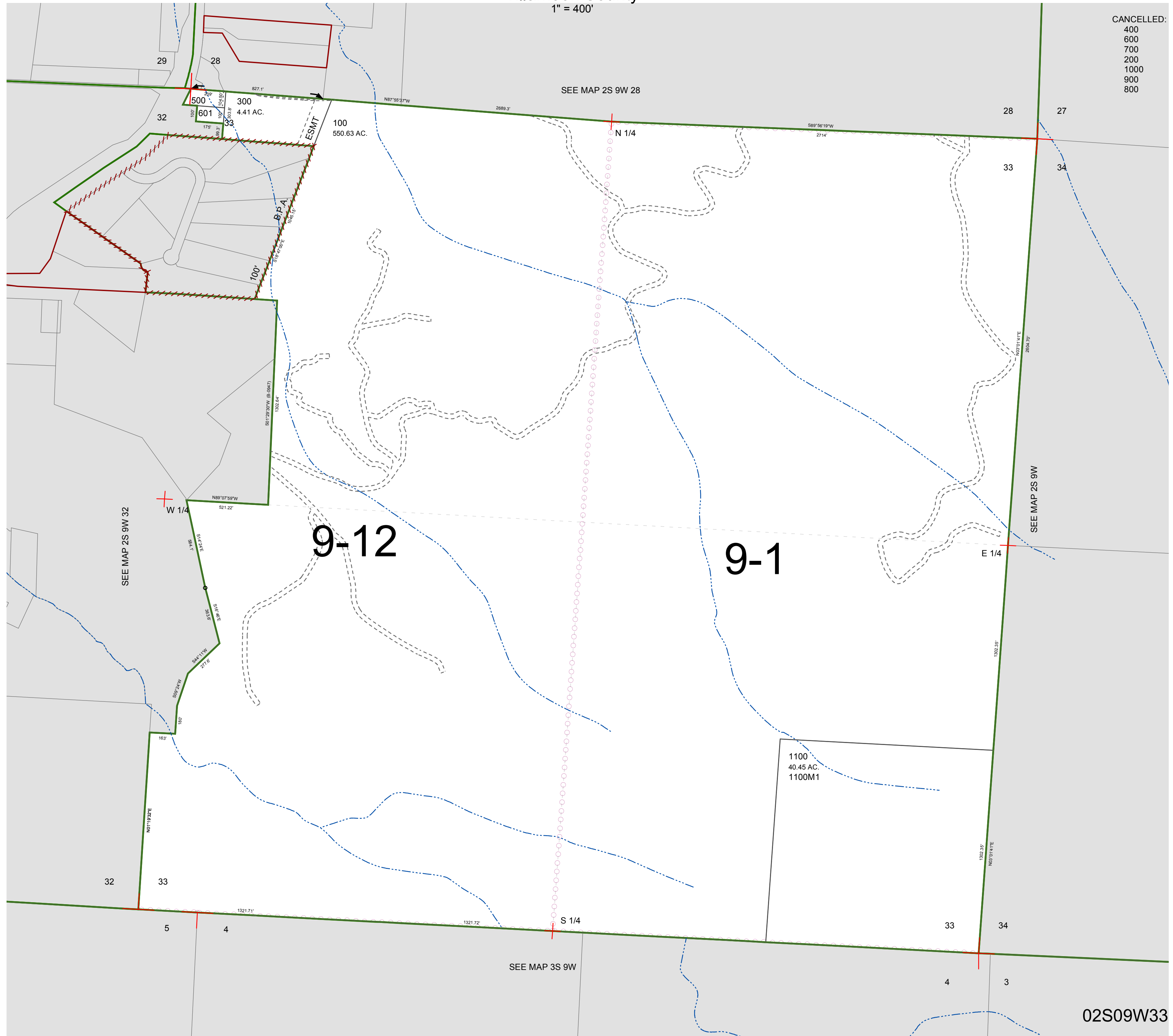
FOR ASSESSMENT AND TAXATION ONLY, NOT SUITABLE FOR
LEGAL, ENGINEERING, OR SURVEY PURPOSES

SECTION 33 T.2S. R.9W. W.M.
Tillamook County

1" = 400'

02S09W33

CANCELLED:
400
600
700
200
1000
900
800



02S09W33

REVISED 2/18/16, WS