

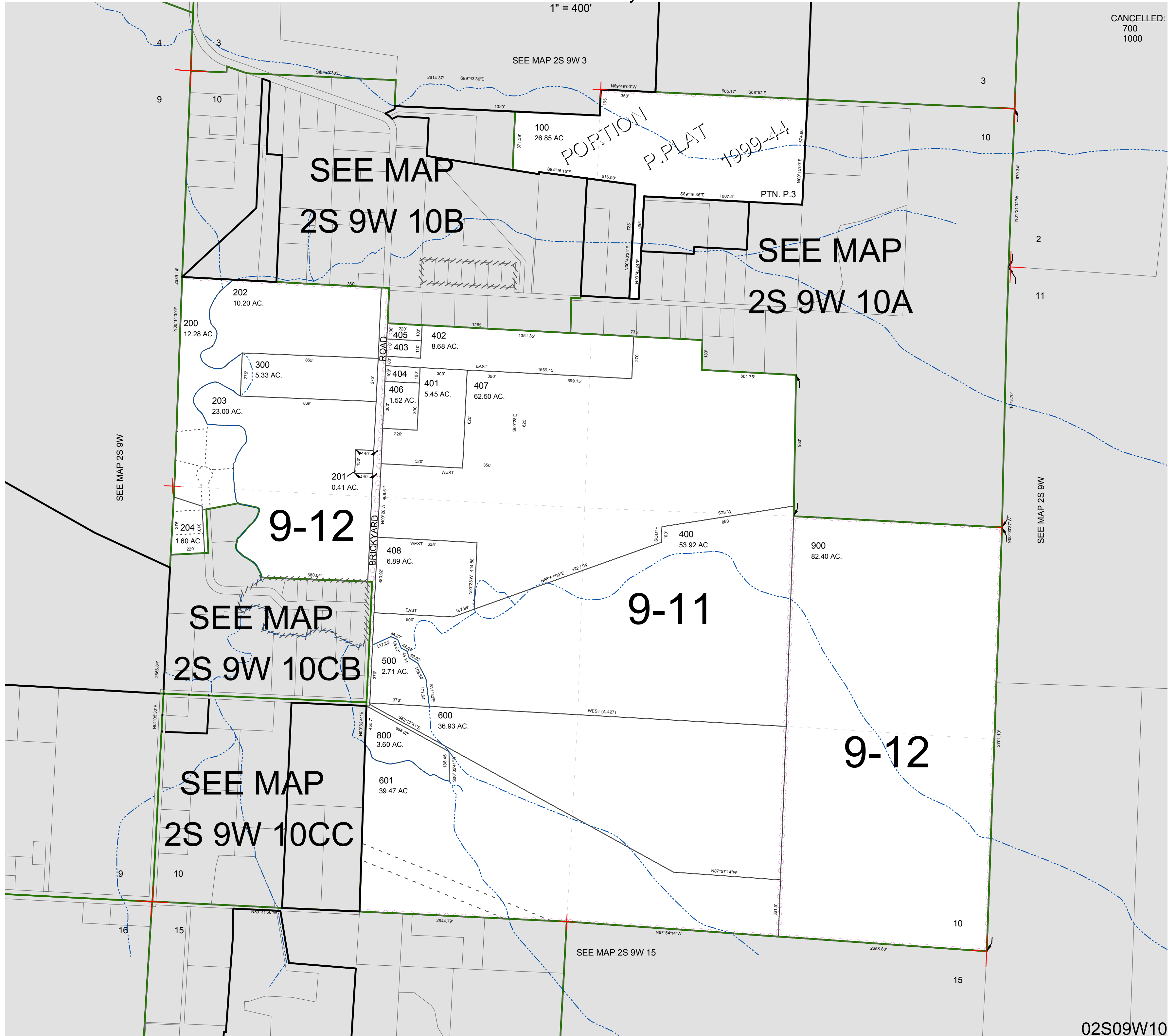
FOR ASSESSMENT AND TAXATION ONLY, NOT SUITABLE FOR LEGAL, ENGINEERING, OR SURVEY PURPOSES

SECTION 10 T.2S. R.9W. W.M.  
Tillamook County

1" = 400'

02S09W10

CANCELLED:  
700  
1000



02S09W10  
REVISED 01/29/09, WS