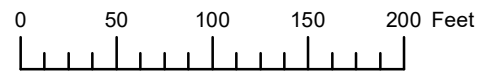


THIS MAP WAS PREPARED FOR ASSESSMENT PURPOSE ONLY

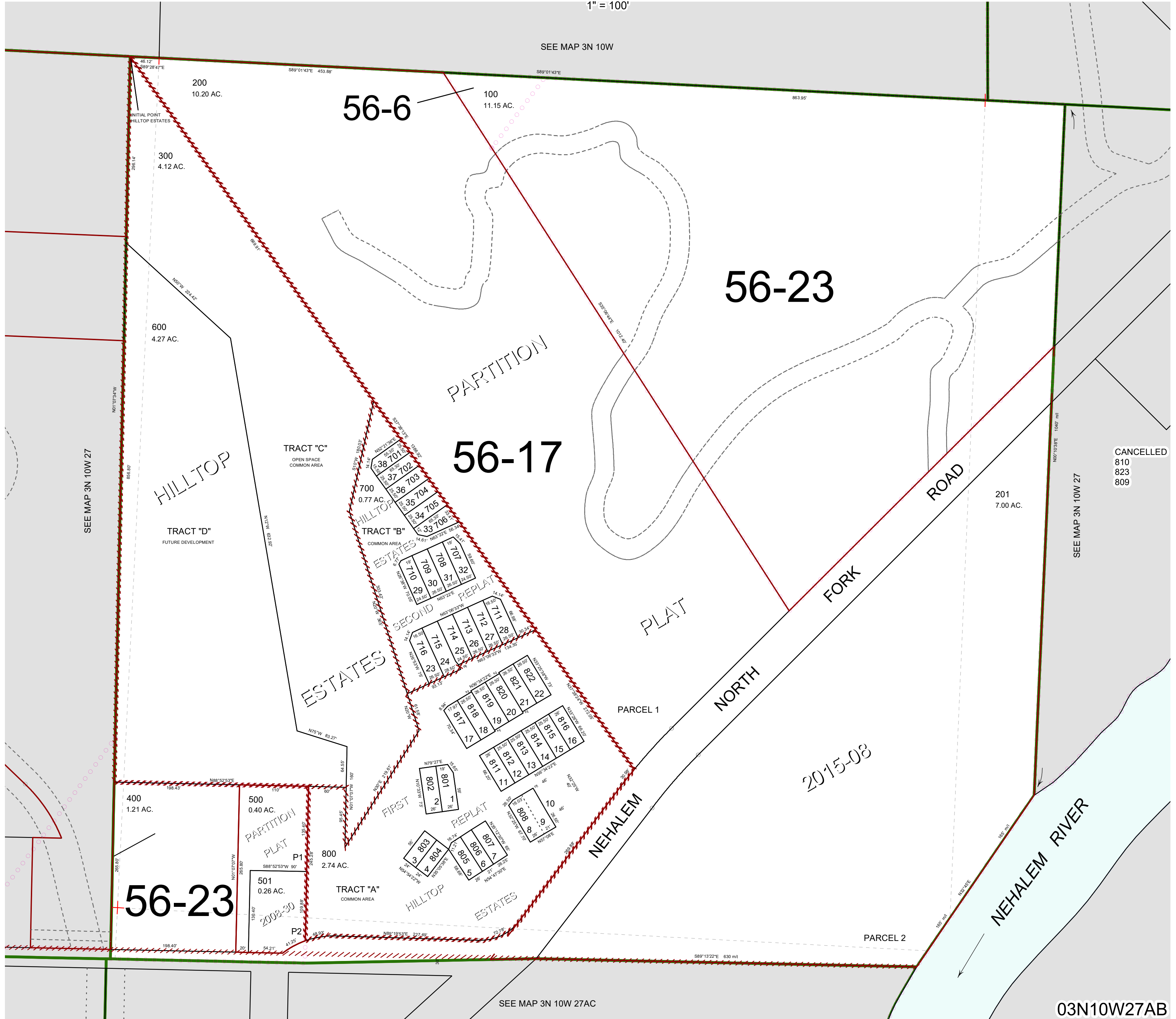


N.W. 1/4 N.E. 1/4 SEC. 27 T.3N. R.10W. W.M.

TILLAMOOK COUNTY

1" = 100'

03N10W27AB



CANCELLED
810
823
809

2015-08

03N10W27AB

Revised 4/11/19, WS