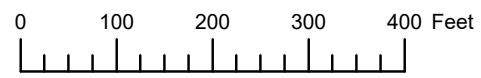


THIS MAP WAS PREPARED FOR ASSESSMENT PURPOSE ONLY

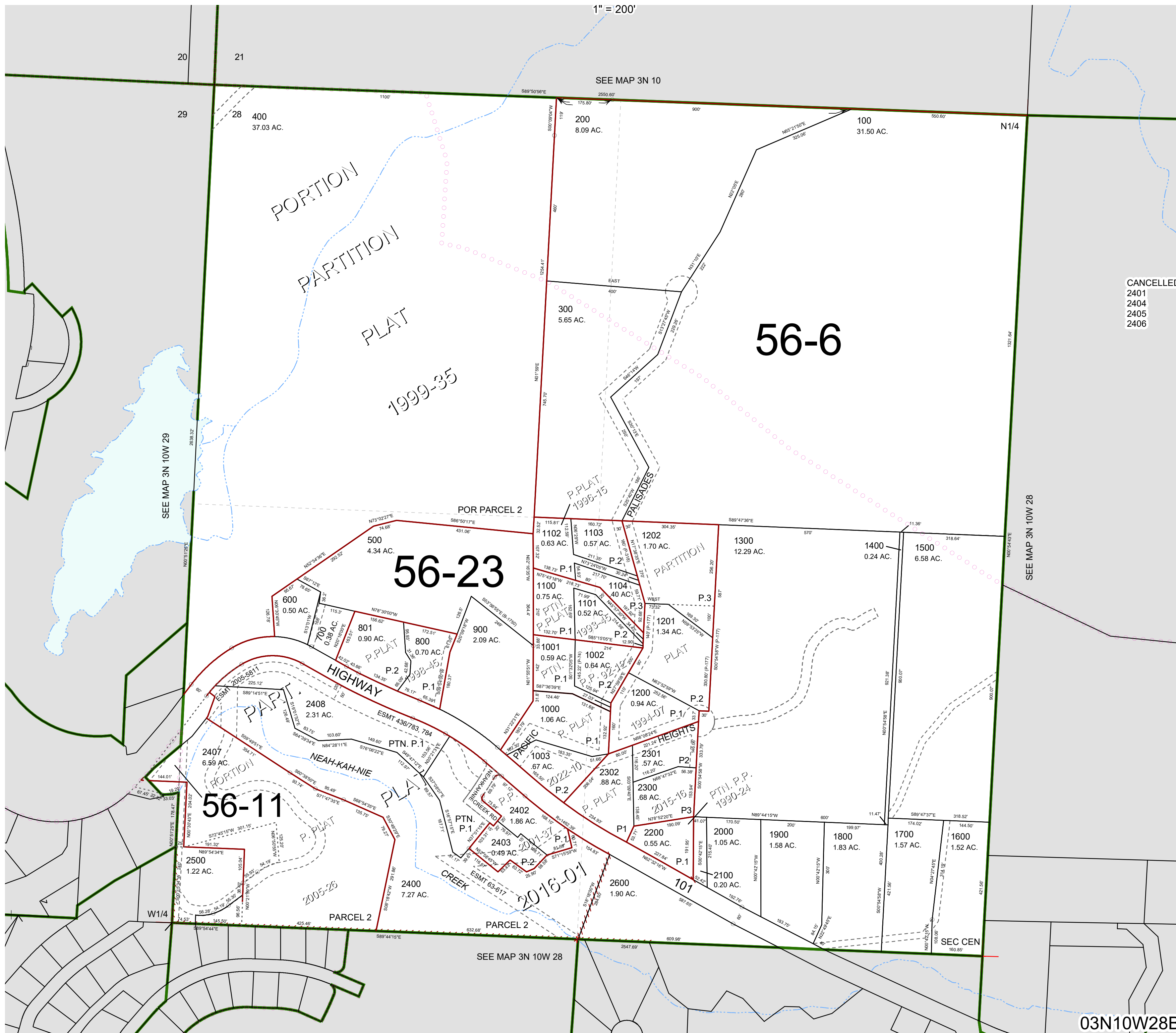


N.W. 1/4 SEC. 28 T.3N. R.10W. W.M.

TILLAMOOK COUNTY

03N10W28B

1" = 200'



CANCELLED  
2401  
2404  
2405  
2406

03N10W28B

Revised 4/28/23, WS