

THIS MAP WAS PREPARED FOR
ASSESSMENT PURPOSE ONLY

SE1/4 SEC.28 T.3N. R.10W. W.M.
TILLAMOOK COUNTY

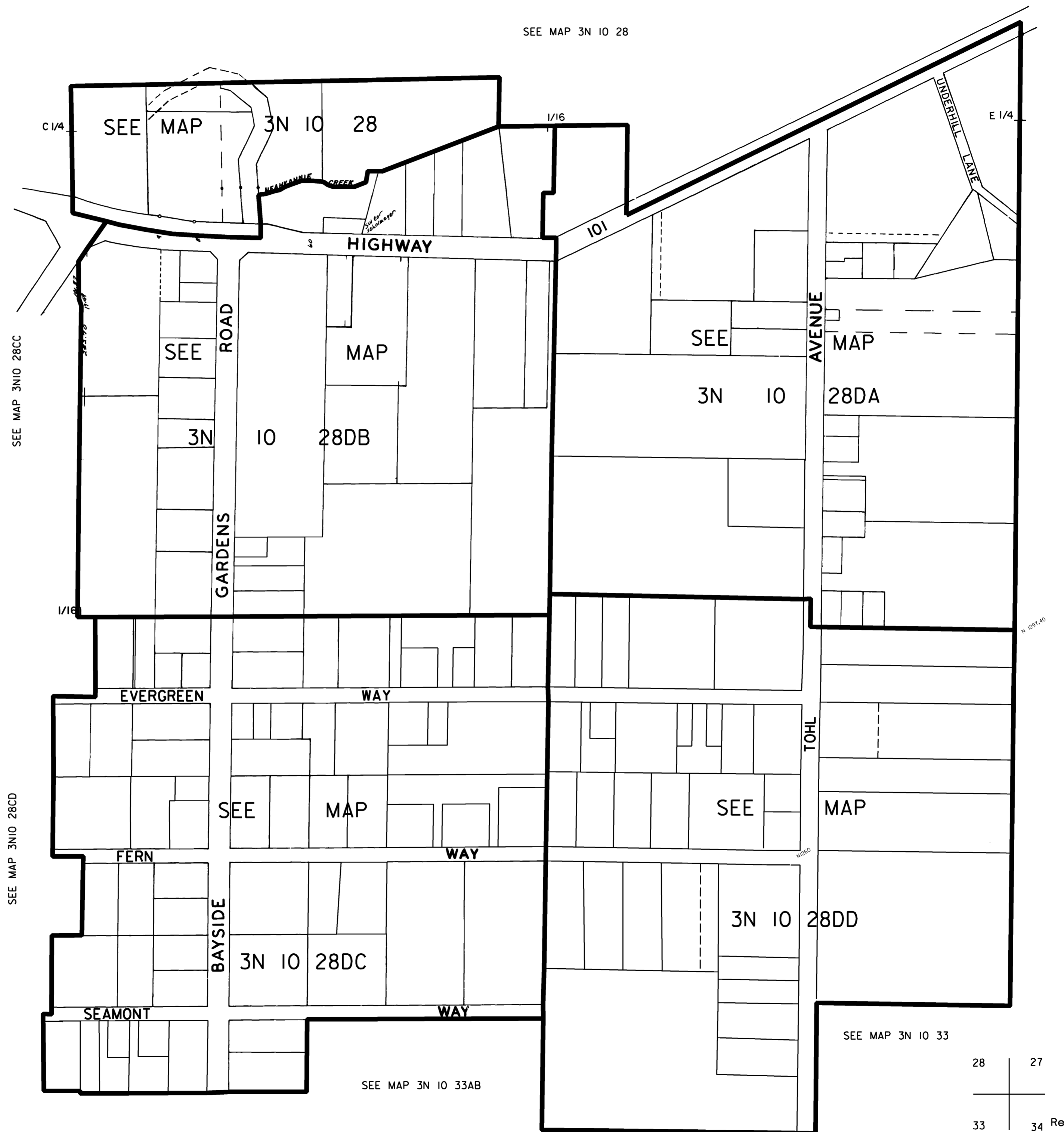
1" = 200'

SEE MAP 3N 10 28

3N 10 28D
BAYSIDE
GARDENS

CANCELLED NO.
ALL
TAX
LOTS
HAVE
BEEN
CANCELLED
AND
RE-MAPPED.

SEE
INDEX.



SEE MAP 3N10 28CC

SEE MAP 3N10 28CD

SEE MAP 3N 10 33AB

SEE MAP 3N 10 33

SEE MAP 3N10 27

28	27
33	34

3N 10 28D
BAYSIDE
GARDENS

Revised 09/01/04, KA