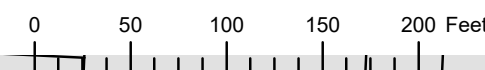


THIS MAP WAS PREPARED FOR ASSESSMENT PURPOSE ONLY

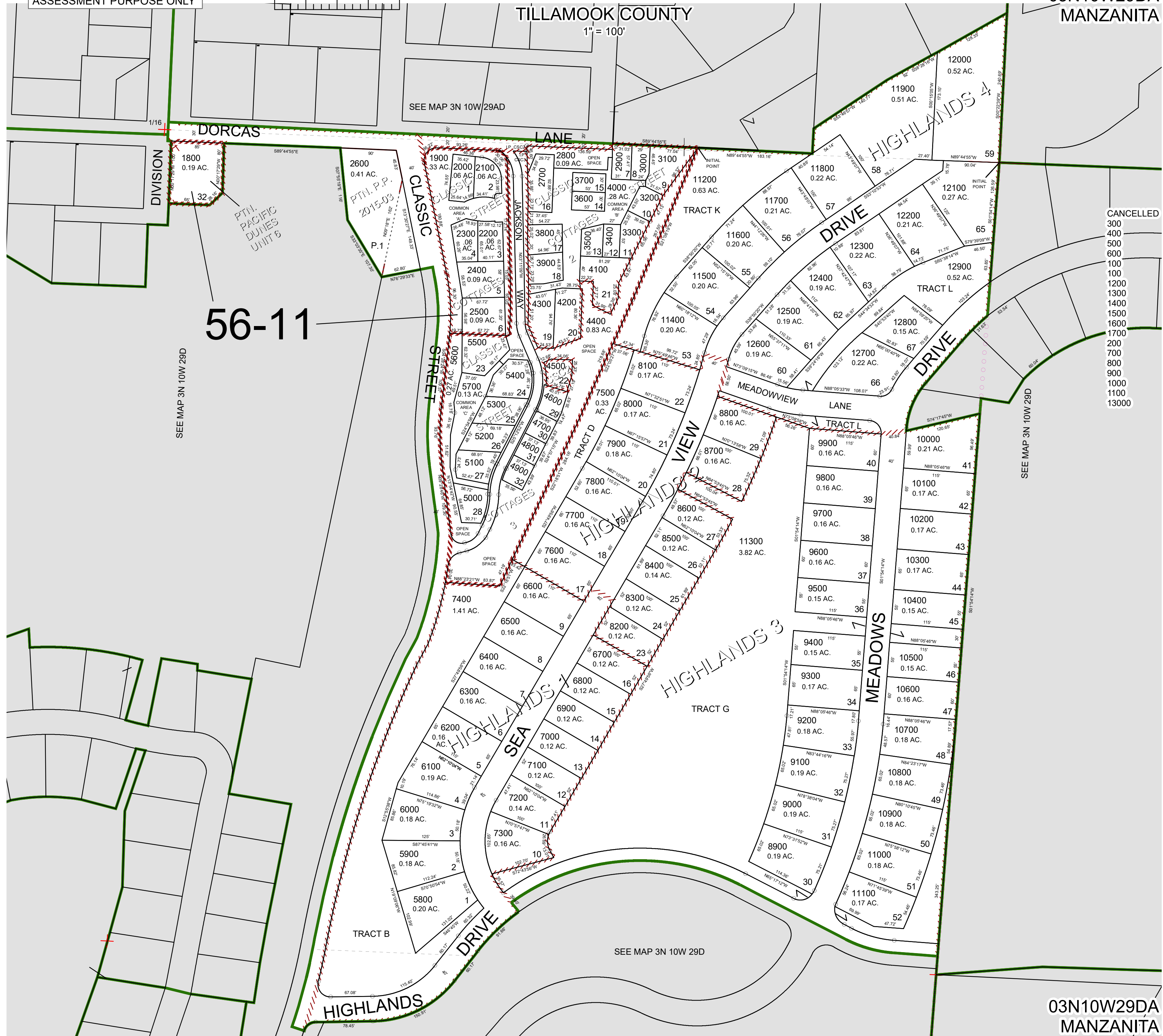


N.E. 1/4 S.E. 1/4 SEC.29 T.3N. R.10W. W.M.

TILLAMOOK COUNTY

1" = 100'

03N10W29DA  
MANZANITA



- CANCELLED
- 300
- 400
- 500
- 600
- 100
- 1200
- 1300
- 1400
- 1500
- 1600
- 1700
- 200
- 700
- 800
- 900
- 1000
- 1100
- 13000

56-11

SEE MAP 3N 10W 29D

SEE MAP 3N 10W 29D

SEE MAP 3N 10W 29D

03N10W29DA  
MANZANITA